

Royal Burgh of
Pittenweem



arts festival 2010

£3.00



Photo: Colin Gallacher

Allan

Royal Burgh of

Pittenweem Arts Festival

2010

Brochure
of
Artists Exhibitions
&
Programme of Events

Patron: The Rt Hon Sir Menzies Campbell CBE QC MP

Published by

The Royal Burgh of Pittenweem Arts Festival

A Company limited by guarantee and a registered charity

Company Number SC233084

Charity Number SC024165

Registered office: 47 High Street Pittenweem Fife KY10 2PG

www.pittenweemartsfestival.co.uk

e-mail: info@pittenweemartsfestival.co.uk

Tel: 01333 313 903

Contents Page

Parking & shuttle bus	page 4	Galleries	page 39-44
Invited artists	page 5-17	Map of venues	centre page
Bursary awards	page 12-14	Events	page 46-57
Artist and venue list	page 20-21	Workshops	page 58-61
Exhibiting artists	page 22-39	Childrens	page 62-65
		Food and drink	page 67



Photo: Colin Gallacher

The Rt Hon **Sir Menzies Campbell** CBE QC MP

I am delighted to welcome you to the 2010 Pittenweem Arts Festival. From its modest beginnings, the Festival has grown in size, variety and quality until it is now one of Scotland's major arts events. Music, drama, and poetry together with the visual arts make a kaleidoscopic experience for all who visit this festival. If you have been before or are visiting for the first time I guarantee that you will be enthralled by what you experience. Enjoy yourself and come again. You will always be welcome.

Jean Duncan: Chair Pittenweem Arts Festival 2010

Hello and welcome to Pittenweem. We hope you enjoy the wonderful atmosphere, the scenery and the diversity of artistic talent. It may be clichéd, but there is something for everyone in this Festival of the Arts.

Our five Invited Artists represent the international aspect of the Festival, while for the fourth year running, we have chosen to support with Bursary Awards two young artists on the verge of their careers.

The importance of craft is highlighted with a new project, The Net Loft Six. A group of six selected craft artists from across Scotland exhibit in this unique building by the harbour.

Taking part and being creative follows on from being inspired, and this year there's a variety of craft workshops most days and for all ages. As 2010 is Fife's Year of Culture, celebrate the arts with us by joining in and discovering new ideas.

There are over 100 artists exhibiting, from across Britain. They will be delighted to speak with you about their work and may even sell you a painting! Your enthusiasm for art and encouragement of artists is greatly appreciated and therein lies the reason for the Festival's continuing success.

On behalf of the Board, I wish you an enjoyable visit.

Festival lift-off!

Celebrate the start of the Festival by launching a balloon.

The balloon that travels the furthest distance wins:

An original painting by local artist Vicki Dreyer

or

A fun personalised mug by Karen Edward of Funky Scottish

Place: Outer Pier Harbour **Price:** £2 a balloon

Time: Saturday 7th & Sunday 8th 11-4.00pm Balloon release 4.30pm each day



Festival parking

There are 2 free car parks within the village, both located off the A917 and clearly indicated by yellow AA signs. See map in brochure centre pages for details.

Drivers should follow the AA signs, and park in **Charles St. car park** or **West Braes car park**.

Please do not take your car into the village.

Artists may deliver and collect from their venue but must return their vehicles to the car park.

Coaches should park only in West Braes car park.

The village has a one-way system, west to east along the High Street and waiting restrictions. Please follow the traffic signs.

The road leading to the harbour is closed to traffic except for residents and business access.

THERE IS NO PARKING AT THE HARBOUR FOR VISITORS

Artists may deliver and collect but should return to the car park.

The road linking the High Street and **University Avenue** is also closed to traffic.

Disabled parking and toilet facilities are available adjacent to the shuttle bus stance in **Charles Street car park**. There are also toilet facilities at West Braes.

Please observe all signs; police and traffic wardens will be on hand to assist.

Park & ride: Festival shuttle bus: daily from August 7th- August 15th 10-5.00

This bus loops continuously (about 20 minutes between buses) from **Charles Street car park** to **West Braes car park**, along the **High Street** down to the **harbour** and **West Shore**, returning by the main road to **Charles Street car park**.

The driver will stop/pick up on request and help with buggies and non-motorised wheel chairs. This service is free, but donations on the bus are appreciated.

Invited *Artists* 2010

Over the past 28 years of the Festival's existence, many well-known Scottish and internationally-acclaimed artists have accepted the invitation to be guest exhibitors.

Using the hall, galleries and public spaces, artists including Will Murray, Adrian Wisnieski, Elizabeth Blackadder, Le Nourissier and Ian Hamilton have made come to Pittenweem because of its reputation for artistic excellence and its unique festival setting.

All genres are welcome, painting, environmental art and installations have been represented. In previous years, the Festival has welcomed an international Festival of 2000, car and bicycles.

Adding to the legacy of the past 114 years, our invited artists continue the tradition of bringing challenging, thoughtful and moving exhibitions to our village. We thank all those artists for accepting our invitation to exhibit at Pittenweem.

More *Horsburgh* 2009: *Drifter*



The exhibition features tapestries from the internationally renowned Dovecot tapestry studio which produces contemporary handwoven tapestries based on designs by Dovecot weavers and collaborations with international artists. The exhibition takes its inspiration from the striking views of the sea from the Old Town Hall venue.

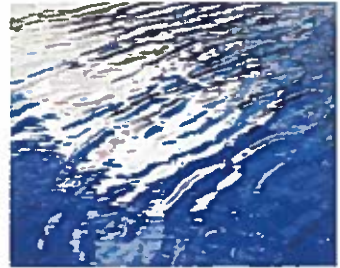


Douglas Grierson, Head Weaver, designed *Baths and Bathers* (detail right) which celebrates the former life of Infirmary Street baths, now housing Dovecot Studios. In the tapestry, reference is made to Seurat's *Bathers at Asnieres* and Damien Hirst's shark.

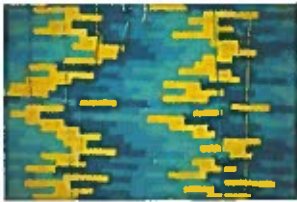


Naomi Robertson, Master Weaver, has blended her distinct monochromatic weaving style, using black as the basis for her figures, with the vibrant colours displayed in the yarn library around the studio (unfinished tapestry left).

Master Weaver **David Cochrane's** tapestry, *Water Surface* is inspired by a series of photographs of water. From a distance the tapestry creates a smooth impression of an undulating water surface; studied up close, the complex mixing of wool required for such a technically challenging tapestry becomes apparent (right and detail far right).



Throughout the Festival a Dovecot weaver will be demonstrating weaving on a loom set up in the exhibition area



Junior Weaver **Jonathan Cleaver's** design (left) is both carefully planned and organic in its nature: the top of the tapestry 'sets off' a numerical sequence which is defined by the individual weaver as they are working. Dovecot Studios' tapestries are designed both by the weavers and in collaboration with artists.

A number of other Dovecot tapestries with a maritime theme will also be displayed, including a tapestry designed by John Bellany RA and a rug designed by Barbara Rae RA.

David Weir, Director of Dovecot Studios, will be giving a talk about the work of Dovecot in the Old Town Hall Saturday 7th August at 2pm. See page 47

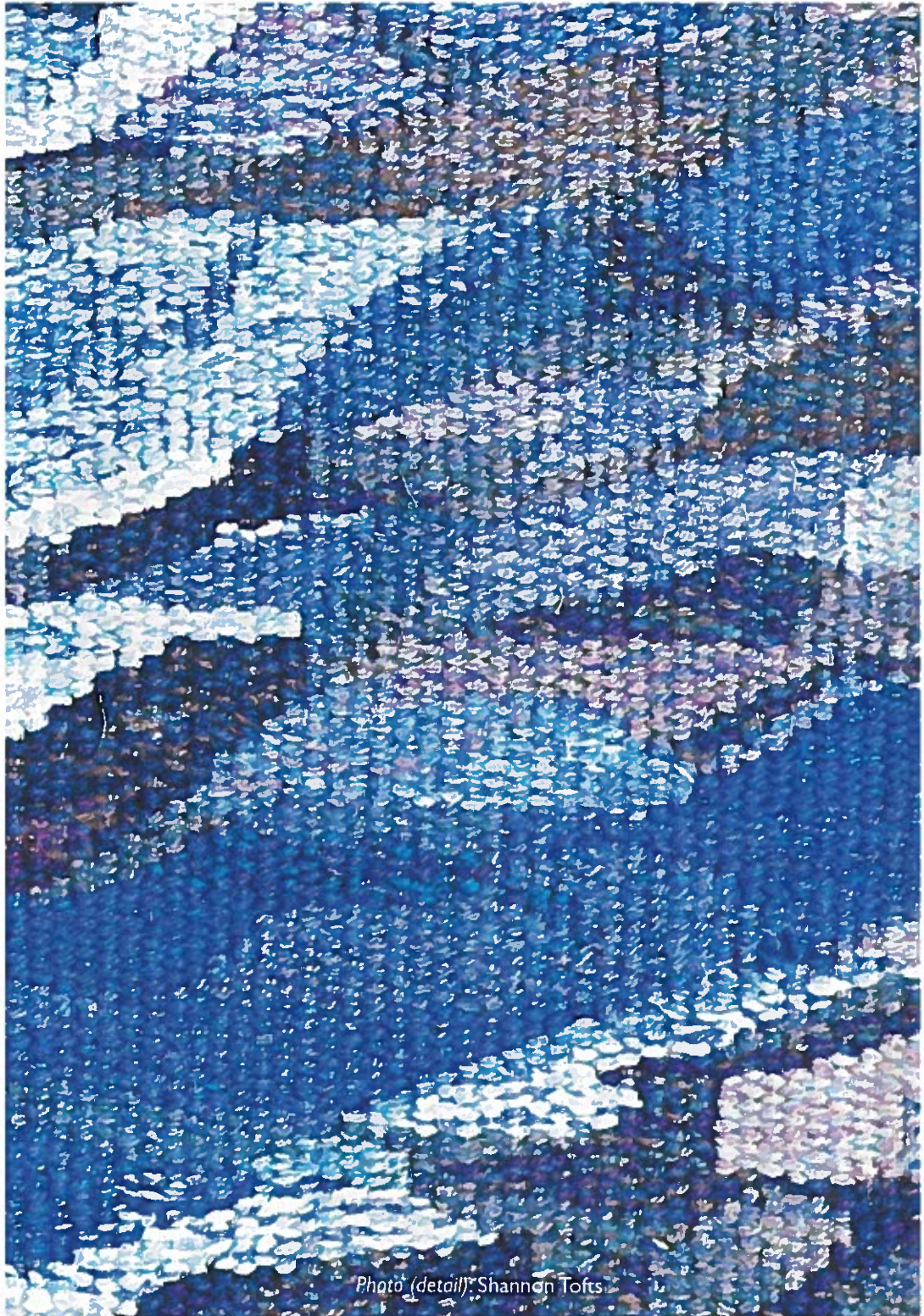


Photo (detail): Shannon Tofts

Born in Gourrock Renfrewshire, Ann studied at Glasgow School of Art evening classes till 1961. She later graduated from Duncan of Jordanstone College of Art in 1985 and since then has worked full time as a professional artist. She presently lives in Aberuthven, Perthshire where her studio is based.

Following travels to France, Switzerland, Greece and Egypt, I realised that home shores were my greatest interest. I have been trying to paint the underlying values and complexities of this land ever since.



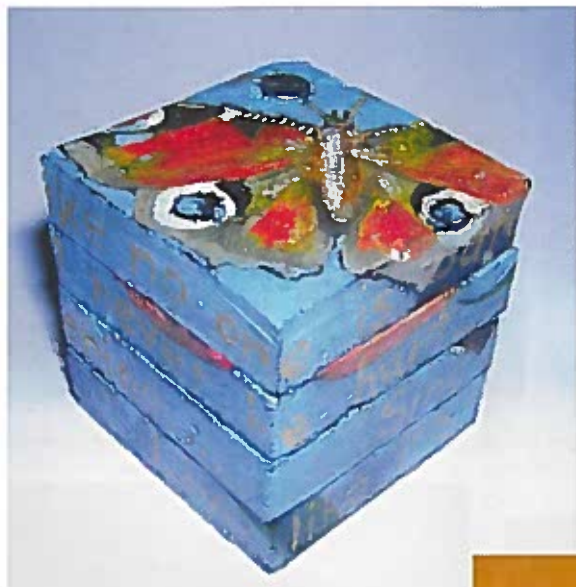
Washed Up gouache

Recently I have been painting the land beside the sea, the shore-line and the shore itself. It always takes me back to my childhood; it was and is my adventure playground with the rocks, rock pools, plants and the tide-line.

Shore Weather Winter gouache



Colour is very important to me and my paintings start with my feelings for a place. Like a musical composition, the colour is the mood. The literal interpretation of a place, I have found, is of no real interest to me but rather the excitement comes from discovering the unexpected shapes and colours that change with every tide.



Cate Inglis is an artist and designer based in Glasgow and is a graduate of Glasgow School of Art. Her work combines her love of painting and mixed media with her art school specialism of 3-dimensional design.

Left: *Dance like no one is watching...*

She draws her inspiration from ancient literature, superstition and symbolism and each work has a narrative theme. The cube form which her work takes, represents an ancient symbol of the Earth and her work celebrates and preserves the accumulated knowledge and creativity of mankind, while highlighting the precarious nature of the human condition.

Night 5



Hamelin



This exhibition focuses on familiar stories and sayings from childhood, and features experimental pieces which explore the deconstruction of her signature cube form. The works combine fond personal memories with themes that will resonate with all.

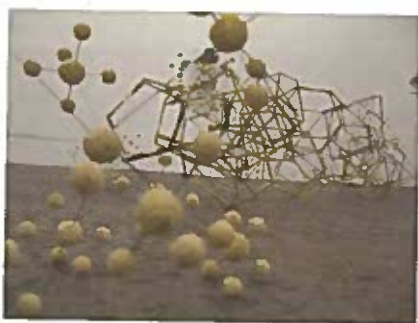
Kaneyuki *Shimoosako*

Venue 9:

Kane (to use his familiar name) is based in Dusseldorf and Japan. He exhibits internationally, merging his Eastern sensibilities with the strengths of current contemporary German art.

A previous exhibition in Cologne created a stunning evocation of the Rhine using massive cut-out sections of black board which wrapped around floor, wall and ceiling.

Another exhibition created organic forms resembling negative spaces, pools of light and air emerging from the shadows of the trees and made from hundred of lengths of twine.



The images above are inspired by arrangements of atoms and are from recent exhibitions in Osaka and Kyoto. In the site-specific installation for the Festival, Kane is again looking deeper into the natural world, at the structures fundamental to nature and adopting a minimal approach influenced by the Japanese Zen garden and its sublime intention and philosophy.

Kane will be present to talk about his work.

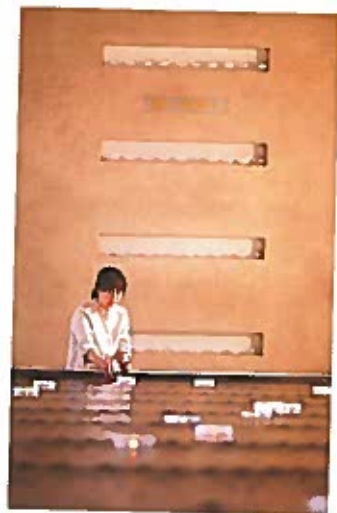


These two project photographs show Kane's ideas for two related works called Nature/Cycle, to be installed at the harbour. One will be of tubular metal and the other, cast concrete.



Japanese artist Keiko Mukaide has lived in Scotland for over a decade. It was a fresh start when she moved to a cottage in Fife eight years ago and when settled there she was fascinated to learn of the local history.

Aware of previous site specific installations that Keiko had created, the Pittenweem Arts Festival commissioned Keiko to produce a work for Pittenweem. This has resulted in the piece *Still Thinking of You*.



Keiko has used the setting of The Old Men's Club at the harbour, now a local community centre, which was traditionally used by retired fishermen. From here, they could keep their eyes on what was going on at the harbour. It was, and remains, a meeting place, connecting people. The local community has changed over years with the ebb and flow of people moving in and out of the village.

The site specific installation for the Festival creates a place where the older generations and the present come together. Old portraits and newly-taken ones are projected onto a glass disk, which is suggestive of mirrors reflecting yourself but also past generations.



Keiko's temporary installations have been seen at the Royal Botanic Garden Edinburgh, the Hill House in Helensburgh, the Talbot Rice Gallery in Edinburgh, Tate St Ives and at York's St Mary's church, where she created a similarly-themed work, *Memory of Place*.

Bursary Award Scheme

In recognition of the importance of encouraging young artists and undergraduates to establish themselves on leaving art school, the Festival offers 2 bursary awards each year; one to a final year student in a Scottish School of Art whose home is in Fife, and another to an artist who has graduated from a Scottish school of Art within the last 5 years.

The bursary consists of a rent -free venue, a waiver of the registration fee and £200.

The selection process is independent of the Festival Board and Committee. We asked one of last year's main invited artists, Janet Shelley, to choose this year's winners from the many and varied submissions:

Ross Brown, currently completing a Master's Degree at Duncan of Jordanstone College of Art.

Elin Isaksson, graduate of Edinburgh College of Art and already setting up her own studion.

Congratulations and we wish you a successful Festival and future career.

Previous bursary awards: 2008 & 2009



Clockwise:
 Pablo Clark *film-maker* 2008; Thomas Walker *artist* 2009;
 Clara Anderson *ceramic sculptor* 2009; Fiona McGarva *glass artist* 2008

My work investigates the experience of urban space in parallel to an exploration of the technical aspects of pictorial construction.

Relating to the flux of construction and destruction that governs architecture, subject matter is drawn from ambiguous spaces where boundaries between civilisation and nature, order and disorder, past and present become blurred and indistinct.

St Peter's Seminary-drift



St Peter's Seminary- vault



My most recent body of work relates to the shifting ideologies inherent within the history of St Peter's Seminary in Cardross. Built in the 60's under a Modernist template, the building embodied a sense of idealism that was both architectural and religious. Since its abandonment, the site has become a haven for "deviant" activities and an icon of urban exploration, a movement which finds its roots in the Situationist's dérive. Through this re-appropriation, the initial intentions of the architecture are both reflected and distorted;

what once stood as a controlled, rational space now assumes an organic, chaotic state both aesthetically and ideologically.

These concerns are filtered through a painting process which mimics the entropic force that brings these sites into motion. Techniques which rely on chance such as pouring, smearing and dripping are layered alongside more controlled marks creating a form of surface tension as representation vies with abstraction.

St Peter's Seminary-stray



Elin *Isaksson*: bursary award 2010 Venue 2

Elin, originally from Sweden, discovered her passion for blown glass during her time at Orrefors Glass School, Sweden in 1998.

After completing her studies at Edinburgh College of Art, she received further tuition at Lindean Mills Glass in Galashiels and at Northlands Creative Glass Centre Lybster. She now works from her own studio in Alloa.

Mimosa



Snow Bowls



She produces very tactile pieces, often with some element of movement within the finished piece; delicate, simple forms in stunning colours.

Her inspiration comes from the play of light, texture and movement in nature. The objects do not necessarily represent a descriptive picture of nature, but a reinterpretation in a tactile, elastic abstraction.

Shoots





Robert Cairns photo: Rick Booth

The Net Loft Six

Venue 21

The importance of craft is highlighted in this new project. Six craft artists were selected from across Scotland for their design, workmanship and passion for their chosen material which shows in the beauty of this exhibition.

My work is inspired by architectural detail, in particular the colours, windows and intricacies of Venetian buildings. The sculptures are constructed from two slabs of porcelain bent into curves and composed as a pair. Spheres and circles are cut away to cast shadows upon the other wall. Colour is applied in vivid bands and glazed in parts which reflects the light contrasting with the chalky matt porcelain. The plates are press-moulded and carved with incised lines. Colour and a transparent glaze is applied and they are intended as decorative platters.

Susan Basham



Lise Bech

I get intense pleasure from all the different stages of my basketmaking: growing and harvesting my own willow, sorting, soaking and weaving with such a very willing and forgiving natural fiber.

After 20 years of making traditional, functional baskets I now let my heart and the beauty of the willow guide me to create organic, asymmetric sculptural forms which reflect the sensuous, symbiotic co-creative relationship between the maker and her material as well as a life lived close to nature.

The emphasis for me, as a maker, is not in the construction of form but in the application of painted surfaces to an object. Form is occasionally pared down to the bare minimum of two dimensions where paintings in clay are created. A white earthenware body offers a suitably neutral base for multiple layers of underglazes and oxides, an image is built using masked paper applications and some sponging and printing techniques are applied. The results are fired at the high end of the earthenware range.

Lucy Duncce



James Donald

Weaving is a process of growth, the natural way in which one activity flows into another until finally one begins the physical act of weaving. James takes great pleasure from the way cloth grows before him, the fluid movement of one cloth evolving into the next. Finding this flexibility of designing on a fairly rigid structure is also one of the pleasurable challenges of weaving cloth. The evolution of ideas and thought processes is essential in finding the perfect solution, if there is in fact a perfect solution. This is a never-ending journey of discovery.



My work rests on some traditional woodworker beliefs. Keep it clean to the eye and simple and strong.

Good woodworking brings pleasure, lasts for centuries and uses traditional joinery to make the most of wood's beauty and strength. In both furniture and larger structures I build with local woods and use non-toxic finishes. My furniture draws heavily on American Shaker and Cotswold Arts and Crafts traditions; vernacular farm buildings inspire my green oak timber frame buildings. I have just completed a green oak timber frame garden house in St Andrews and will be building oak furniture over the summer.

Peter Kushner

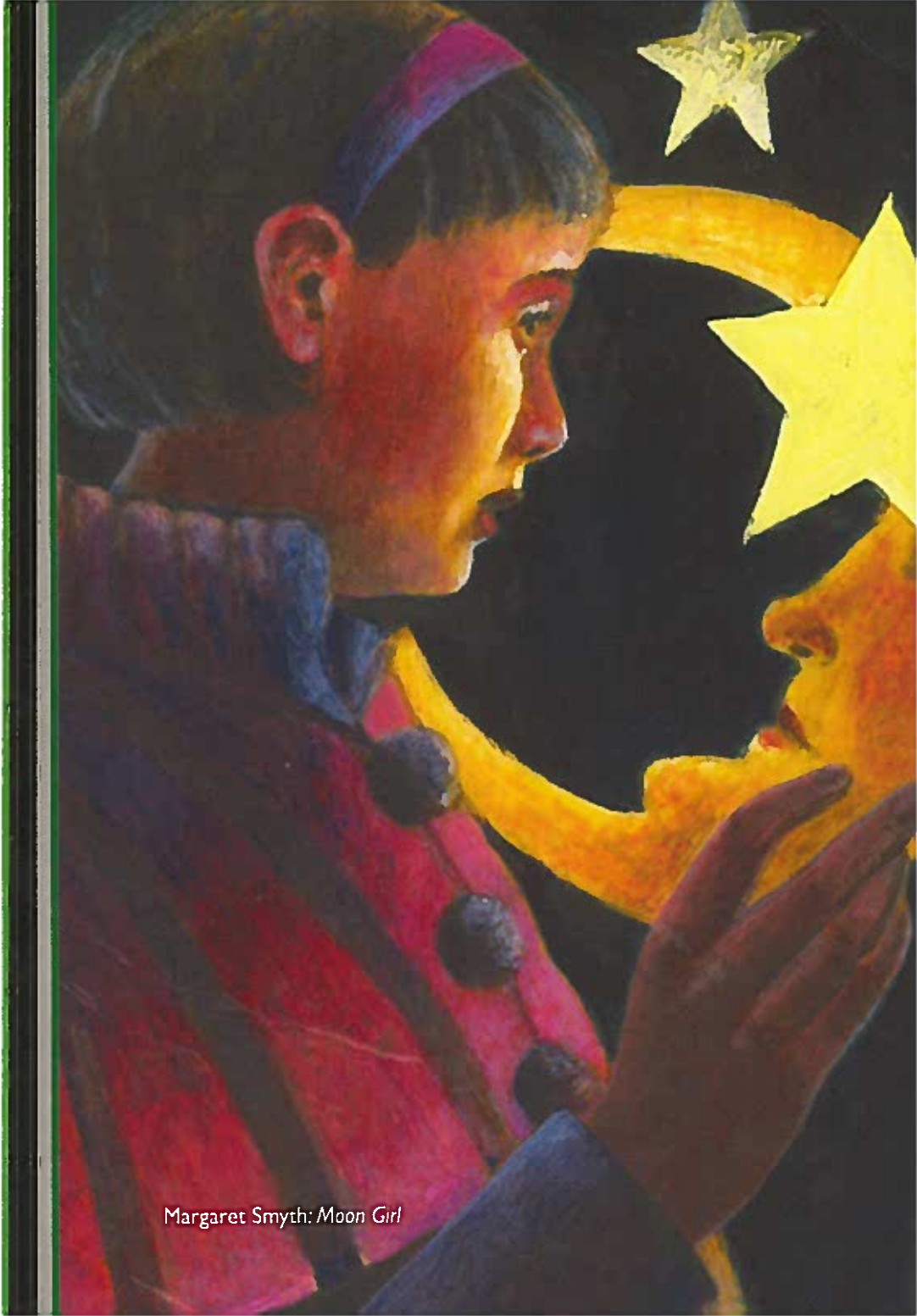


Elin Isaksson



Elin, one of our bursary winners this year, has already made advances in establishing herself by opening her own studio in Alloa. She set up in business as a professional designer and glassmaker in 2006 and went full-time with her craft in 2009.

It is fitting that her exhibition should be alongside those who have already made their mark on the Scottish scene and internationally.



Margaret Smyth: *Moon Girl*

Tea Cozy Tea

The Kitchen Church Hall Venue 76

What do you knit after a shoal of fish? Why, tea cosies of course!

The question and answer came after the success of last year's knitted fish project and auction in aid of the RNLI. It had involved a diverse group of knitters knitting, chatting, e-mailing and phoning around Britain and abroad, with the core group meeting to knit in the Festival office. Their efforts and the public's generosity raised over £1700 for charity. It also gave lapsed knitters the excuse to be creative again and use their skills in a good cause. It brought people together and made them smile.



So this year's theme of tea cosies and cafetiere covers is prompted by the new craze (so we are told) for the institution of afternoon tea. A plate of cakes, your best china and a pot of tea or coffee is just not complete without a unique, hand-made cosy.



Until you visit this special Festival exhibition you'll never know just how much you need a tea cosy.

And what Macmillan Nurses needs is funds to support cancer patients. So, you buy the cosy and we give them the money. It's another good cause. www.macmillan.org.uk



And talking about bringing people together, join us for afternoon tea and you can try out a cosy.

Look out too for Lizzie with her home-made Cup Cakes – edible works of art!

Teas served on:

Saturdays, Sundays and Wednesday 2 -4pm
The Kitchen Church Hall James Street.

Artist and Venue List

A	Allan Tom	79R	Dreyer Vicki	51	Kilpatrick L	71			
	Anderson Bob	50	Duckfield Jane	22	Kingsley John	6			
	Art Extraordi...	9	Duncan Jules	42R	Knox Linzi	13			
	<u>Austin Pauline</u>	<u>86</u>	Dunce Lucy	21	Kramek Pat	47			
			<u>Dunlop Anne</u>	<u>73</u>	<u>Kushner Peter</u>	<u>21</u>			
B	Backgate Gall	58R	E	Edward Karen	13	L	Lacome Susie	30	
	Bain Andy C	3R		<u>Finley George</u>	<u>5</u>		Ledward Ian	23	
	Bannerman M	46		F	Ferguson A E	57R		Lindsay Sandra	47
	Barclay Anne	61			Finley George	5		<u>Little Gallery</u>	<u>16</u>
	Bartlett Paul	27			Fisher Gallery	6R			
	Basham Susan	21			Fisher Jan	6			
	Bech Lise	21			Fleming Barbara	14R	M	MacDonald A	4
	Behrens R	43R			Fleming James	14		Macduff Mary	85
	Beveridge Alan	60			Forbes Jane	67		McGill Susan	30
	<u>Blue Door Gall</u>	<u>67R</u>			Forsyth Susan	58		McGregor Lynn	24
	Boston Kirsten	64R			Fraser Nicky	40		MacIntyre Hilke	29
	Brain Cheryl D	95			French Doris	40		MacIntyre Ian	29
	Brown Ross	39			Fruergaard-J M	38		McKend Leanne	65
	<u>Byers Marlene</u>	<u>2R</u>			<u>Funky Scottish</u>	<u>13R</u>		Mackinnon A	43
								MacLeod D	8
C	Cairns Robert	6	G	Geyer-Brooks L	62		McBride Tracy	62	
	Caldwell Sheila	77R		Gifford John	69		McCarthy Liz	60	
	Capability Scot	76		Gillespie J	89		McFarlane Jo	94	
	Cheape M	30		Graham Andy	10		McFarlane Betty	94	
	Clark Mairi	87R		Graham David	36		McLeod Esther	42	
	Coach House	38					McLeod Nanzie	42	
	Cockburn Tim	29					McLeod Sarah	42	
	Coleman Bobbie	46	H	Heald Judith	88R		McPherson E	33	
	Collins Derek	25R		Heath Renate	66R		McStay Adrienne	95	
	Crawford L	38		Henderson D	64R		Mackin David	90	
	Crawford R	42		Holden Mark	22		Mead Sara	47	
	Cunningham A	78		Holland Pat	22		Midson Alison	58	
	Cunningham H	53R		Hutchison A E	18		Mitchell Craig	23	
	<u>Cyster Poppy</u>	<u>81R</u>					Mitchell Sheila	37	
							Monteith Una	51	
D	Dakin Jean	40R		I	Inglis Cate	7	Morris Roger	31	
	Daly Erin	38			<u>Isaksson Elin</u>	<u>21</u>	Morris Scott	61	
	Davies Allan	62		J	Jack Colin Ross	82	Morrow Suzi	54	
	Donald James	21			Jack Jo	45	Muir Morag	76	
	Donald Mac	83					Mukaide Keiko	92	
	Dovecot Studios I		K	Kamel Lesley	60		Murphy Joe	37	

Artist and Venue List

	Murray Dawson	60		Robertson B	60	T	Tait Gillian	61
	Murray Liz	60		Robertson D	63		Tea Cozy Tea	76
	<u>Murray Graeme</u>	<u>19</u>		Robertson M	62		Thomas Kirsty	11R
N	Neale K	70		Robson Michael	56		Thomson J	73R
	Nelson John	67		<u>Rua Adolfo</u>	<u>35R</u>		Thomson Kim	47
	<u>Paul Noble</u>	<u>3R</u>	S	St And Photo	96R		Thorbjornsen I	34
				Sabine Wendy	72R		Thorbjornsen R	34
O	Outbye Gallery	60		Salvage Martin	68R		Tocher Sheila	91R
	Ovenstone Art	61		Scott Louise	49		Turner Angela	54
	<u>Open Exhibition</u>	<u>74</u>		Shelley Janet	31		<u>Turpie Mike</u>	<u>62</u>
				Shepherd E	12	W	Walker Ruth	60
P	Page Pottery	15		Shimoosako	K93		Ward J & C	28
	Page Amy	15		Slm Dot	22		Webster E M	55
	Parker Clare	94R		Sime Marjory	48R		Wegmuller A	75R
	Paterson Carol	57R		Smith George	20		Williams B	40
	Pattisson H	59		Smith Gill	26R		Williamson K	46R
	Pelly Patrick	62		Smith Margaret	84		Wilson Frances	45R
	Pettigrew J	41		Smith Sandy	84		Wright Gina	52
	<u>Pittenweem Pott</u>	<u>62</u>		Smyth Margaret	43R		<u>Wright Steve</u>	<u>62</u>
				Stevens Lys	17R	Y	Young Georgie	80R
R	Raskin Philip	44R		Stewart Moyra	32R		Yule Liz	4
	Rea Ernest	31						

Invited artists and bursary award artists are shown above in **bold** type.

R is for **Raffle**. Many artists have kindly donated art work as raffle prizes. An **R** next to their name means that they have a raffle prize displayed and tickets can be bought at their venue. The ticket sales help the Festival funds and we are very grateful to both the artists and the public for their support. The raffle will be drawn after the Festival and winners will be notified.

The Festival is funded by the registration fees of the participating artists as well as small grants and donations. Artists have their venue number displayed on an official blue board, outside their venue. Any venue without an official blue board is not part of the Festival and the exhibitor has not paid the registration fee.

It is unfortunate that there are some people who take advantage of the artists who have paid the registration fee. It is the fee that enables the continuing success of our unique event.



Dovecot Studios: Invited Artist

Venue 1

The Old Town Hall
Cove Wynd
10.00 - 5.00



Detail: Baths & Bathers

www.dovecotstudios.com

Liz Yule

Venue 4

15 Cove Wynd
10.00 - 5.30

Light Inspired

www.lizyule.com



Marlene Byers

Venue 2

The Undercroft
Cove Wynd
11.00-5.00



R

Angus L M Macdonald

Venue 4

15 Cove Wynd
10.00 - 5.30

Light Inspired

www.angusmacd.co.uk



R

Andy C Bain

Venue 3

12 Cove Wynd
10.00-5.00

Gowd & Siller



R

George Finley

Venue 5

2 High Street
10.00-6.00

Linear Relationships

www.georgefinleyart.com



Paul Noble

Venue 3

12 Cove Wynd
10.00-5.00

*Scottish Landscapes
in Acrylic*



R

Fisher Studio & Gallery

Venue 6

11-13 High Street
10.00 - 6.00

*Artists &
Craftworkers*

www.fishergallery.co.uk



F

Cate Inglis: *Invited Artist*

Venue 7

23 High Street
10.00 - 5.00

*Granny's Wisdom*³



www.cateinglis.co.uk

Kirsty Thomas

Venue 11

Barnett's Bakers
High Street
9.00-5.00 Mon-Sat

Lovely Pigeon Loves Vintage



www.lovelypigeon.com

R

Duncan Macleod RSW

Venue 8

27 High Street
10.00-5.00

Where Sea & Sky Entwine



Elizabeth Shepherd

Venue 12

37 High Street
10.00-5.00

*Flowers & Hens
from Crail*



www.elizabethshepherdetchings.co.uk

Art Extraordinary

Venue 9

27 High Street
10.00-5.00

The Book of Deer



www.artextraordinarytrust.co.uk

Funky Scottish

Venue 13

41 High Street
10.00 - 5.00



www.funkyscottish.co.uk

R

Andy Graham

Venue 10

31 High Street
10.00 - 5.00

*Andy's
Art world*



www.andysartworld.co.uk

Barbara Fleming

Venue 14

47 High Street
9.30 - 5.30

Colours of Nature



www.bibflamingo.etsy.com

R

James Fleming

Venue 14

47 High Street
9.30-5.30

Colours of Nature



Anita E Hutchison

Venue 18

The Cellar
13b Water Wynd
10-5.00

*Stitched
Step By Step*



www.edge-textileartists-scotland.com/gallery/ahutchison/index.htm

PAGE

Pottery

Venue 15

49 High Street
10.00-5.30



www.pagepottery.co.uk

Graeme Murray

Venue 19

12 Water Wynd
10.00-5.00

*Long Time to
Become Young*



www.myspace.com/graeme_murray

The Little Gallery

Rosemary Bassett (detail)

Venue 16

20 High Street
10.00-5.00
Sun 2.00-5.00



George Smith

Venue 20

Water Wynd
Box Compound

Art from a Can



www.kingdomsprayart.com

Lys

Stevens

Venue 17

13a Water Wynd
10.00-5.00

*Chasing Colour
& Light*

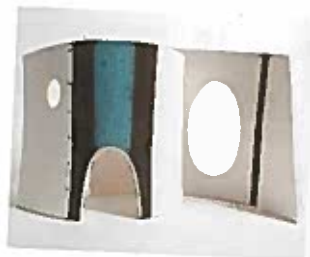
www.lysstevens.co.uk



Susan Basham

Venue 21

The Net Loft
foot Water Wynd
10.00-5.00



R

James Donald

Venue 21

The Net Loft
foot Water Wynd
10.00-5.00



www.concretewardrobe.co.uk

Peter Kushner

Venue 21

The Net Loft
foot Water Wynd
10.00-5.00



Lise Bech

Venue 21

The Net Loft
foot Water Wynd
10.00-5.00



www.bechbaskets.net

Jane
Duckfield

Venue 22

1 Mid Shore
10.00-6.00

*More Colour in
the Landscape*



Lucy Dunce

Venue 21

The Net Loft
foot Water Wynd
10.00-5.00



www.lucydunce.co.uk

Mark
Holden

Venue 22

1 Mid Shore
10.00-6.00

2010 Impressions

www.markholdenart.co.uk



Elin Isaksson: *Bursary Award*

Venue 21

The Net Loft
foot Water Wynd
10.00-5.00



www.elinisksson.com

Pat
Holland

Venue 22

1 Mid Shore
10.00-6.00

*Landscapes &
Flowers in Oils*

www.pat-holland.com



Ian Ledward

Venue 22

1 Mid Shore
10.00-6.00

4 Seasons Multi-media Pictures



www.giffordfarm.com

Derek Collins

Venue 25

3 Mid Shore
10.00-5.00

Flaming Art



www.flamingart.co.uk

Dot Sim

Venue 22

1 Mid Shore
10.00-6.00

Contemporary Precious Metal Jewellery



www.dotdotsim.com

Gill Smith

Venue 26

5 Mid Shore
10.00-5.00

New Works



www.gillsart.net

Craig Mitchell

Venue 23

Fish Loft
Mid Shore
10.00-5.00

New figurative ceramics



www.craigmitchellceramics.com

Paul Bartlett

Venue 27

8 Mid Shore
10.00-5.30

Natural Selection



www.naturalselectiongallery.co.uk

Lynn McGregor RSW

Venue 24

The Granary
Mid Shore
10.00-5.00

New Paintings



www.lynnmcgregor.co.uk

R

James & Caroline Ward

Venue 28

16 Mid Shore
10.00-5.00

Seadreams: Handcrafted Jewellery & Artefacts



Tim Cockburn

Venue 29

23 Mid Shore
10.00-5.00

Everyday Life



Susie Lacombe

Venue 30

24 Mid Shore
10.00-5.00

*Impressions of
the East Neuk*



www.craigallery.com

Hilke
MacIntyre

Venue 29

23 Mid Shore
10.00-5.00

*Ceramic Reliefs,
Linocuts & Paintings*



www.macintyre-art.com

R

Susan McGill

Venue 30

24 Mid Shore
10.00-5.00

New Ceramics 2010



Ian MacIntyre

Venue 29

23 Mid Shore
10.00-5.00

*Relief Prints &
Paintings*



www.macintyre-art.com

Janet Shelley

Venue 31

3 Bruce's Wynd
10.00-5.00

Making Waves



Malcolm Cheape

Venue 30

24 Mid Shore
10.00-5.00

*Maritime
Paintings*



www.malcolmcheape.com

Roger Morris

Venue 31

3 Bruce's Wynd
10.00-5.00

Making Waves



Moyra Stewart

Venue 32

4a Bruce's Wynd
10.00-5.00

New Work

www.moyrastewart.com



R

Adolfo Rua

Venue 35

School Wynd
below
Coach House
10.00-6.00

www.adolforua.blogspot.com



Eilidh
McPherson

Venue 33

5 Bruce's Wynd
10.00-5.00

Alterworld



David Graham

Venue 36

Old Church House
School Wynd
10.00-5.00

www.photograhams.com



Ian Thorbjornsen

Venue 34

The Bakehouse
Bruce's Wynd
10.00-5.00

The Blues



Sheila Mitchell

Venue 37

5 School Wynd
10.00-5.00

*Above the
Watermark*



Ricky Thorbjornsen

Venue 34

The Bakehouse
Bruce's Wynd
10.00-5.00

The Blues



Joe Murphy

Venue 37

5 School Wynd
10.00-5.00

*Landscapes Human
Face & Body*



www.joe-murphy-portraits.com

The Coach House

Pittenweem

Mette Fruergaard-Jensen

Venue 38

Top of
School Wynd
10.00-5.00



Doris French

Venue 40

42 High Street
10.00-5.30
*Cutting Edge of
Art Fabric Collage*



Ross Brown: Bursary Award

Venue 39

The Old Yard
38 High Street
10.00-5.00



Jennifer Pettigrew

Venue 41

52 High Street
10.30-5.00

*New Paintings
and Prints*



www.jennifer-pettigrew.com

Jean Dakin

Venue 40

42 High Street
10.00-5.30

*Pastels
on Paint*



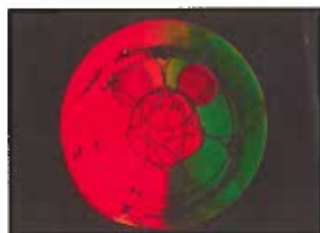
R

Jules Duncan

Venue 42

54 High Street
10.00-5.30

Studio 54



R

Nicky Fraser

Venue 40

42 High Street
10.00-5.30

*Crazy Colours
on Canvas*



Esther McLeod

Venue 42

54 High Street
10.00-5.30

Studio 54



www.nanziemcleod.com

Nanzie
McLeod

Venue 42

54 High Street
10.00-5.30

Studio 54

www.nanziemcleod.com



Philip
Raskin

Venue 44

8 Calman's Wynd
10.00-late

Reach for the Sky



Sarah
McLeod

Venue 42

54 High Street
10.00-5.30

Studio 54

www.nanziemcleod.com



Frances
Wilson

Venue 45

2 Calman's Wynd
10.00-5.00

*Veer North
Porcelain Lace*



www.veemorth.org.uk

Reinhard Behrens

Venue 43

7 Calman's Wynd
10.00-5.00

*The Naboland
Film Project*

www.naboland.co.uk

R

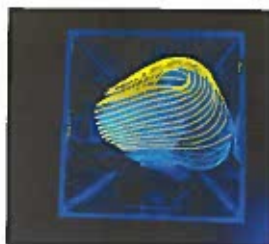


Jo Jack

Venue 45

2 Calman's Wynd
10.00-5.00

www.tinshedtextiles.co.uk



Margaret Smyth

Venue 43

7 Calman's Wynd
10.00-5.00

*New Mixed-Media
Paintings*

Page 30



R

Mark
Bannerman

Venue 46

35 Mid Shore
10.30-5.00

*3-D Artist's
Giclee Prints*

www.myspace.com/mark_bannerman



Kathryn
Williamson

Venue 46

35 Mid Shore
10.30 - 5.00

*Contemporary Silver
Jewellery*

02222 523211 | 01203 854100

R

Bobbie Coleman

Venue 46

35 Mid Shore
10.30 - 5.00

Glass & Light

0202 284 1111 | 01223 314444



Pat
Kramek

Venue 47

42 Mid Shore
10.00 - 5.00

Art of Seeing

0202 284 1111 | 01223 314444

R

Sandra Lindsay

Venue 47

42 Mid Shore
10.00 - 5.00

*Contemporary &
Traditional Stained Glass*

0202 284 1111 | 01223 314444



Sara Mead

Venue 47

42 Mid Shore
10.00 - 5.00



Kim Thomson

Venue 47

42 Mid Shore
10.00 - 5.00

*Handmade
Jewellery*

0202 284 1111 | 01223 314444



Manjory Sime

Venue 48

41 West Shore
10.00 - 5.00

A Free Spirit

0202 284 1111 | 01223 314444

R



Louise Scott

Venue 49

41 West Shore
10.00 - 6.00

0202 284 1111 | 01223 314444



Bob Anderson

Venue 50

15 West Shore
10.00-5.00

*Paint Pastel
Pen plus Prints*

www.ssaagallery.org.uk



Heather Cunningham

Venue 53

Seabeach
21 West Shore
10.00-5.00

*Colour & Light
Home & Abroad*



Vicki Dreyer

Venue 51

16 West Shore
10.00-5.00

*Canvases &
Clay Time*

www.vickisart.com



Suzi Morrow

Venue 54

1 West Braes
10.00-5.00

*The Return
of Suziblue*



Una Monteith

Venue 51

16 West Shore
10.00-5.00

*Canvases &
Clay Time*

www.vickisart.com



Angie Turner

Venue 54

1 West Braes
10.00-5.00
*New Sculpture
& Paintings*

www.atthegallery.co.uk



Gina Wright

Venue 52

18 West Shore
10.00-5.00

*Movement
Colour
& Light II*

www.ginawright.co.uk



Ethel Mary Webster

Venue 55

Old Coal Yard
66 High Street
10.00-5.00



Michael Robson

Venue 56

64 High Street
10.00-5.30

*Impressionist
Landscapes
& Harbour
Scenes*



www.michaelnormanrobson.co.uk

Hatti
Pattison

Venue 59

2 Tollcross
10.00-5.00

*Textile, Expressive
Painting Collection*



www.hattipattison.com

Carol
Paterson

Venue 57

59 High Street
10.00-6.00

*Recent Work:
Paintings, Glass,
Prints*



www.carol-paterson.co.uk

R

The Outbye
Gallery

Venue 60

3 School Drive
Ovenstone
10.00-5.00

The Artists Lunch

www.theoutbyegallery.com



Barbara Robertson

Anne E
Ferguson

Venue 57

59 High Street
10.00-6.00

*Recent Work:
Paintings, Glass,
Prints*



R

Ovenstone Artists

Anne Barclay

Venue 61

Old Schoolhouse
School Drive
Ovenstone
10.00-5.00

Seven Artists

www.ovenstone-artists.com



Backgate
Gallery

Susan Forsyth

Venue 58

11 South Loan
10.00-5.00

*Contemporary
Artwork &
Original Crafts*



www.thewhitehouse-pittenweem.co.uk

Pittenweem
Pottery

Steve Wright

Venue 62

West Grangemuir
Farmhouse
10.00-5.00

*Pottery; Oils;
Pastels; Watercolours*

www.pittenweempottery.com



Derek Robertson

Venue 63

Kellie Castle
12.00-5.30



www.derekrobertson.com

Renate Heath

Venue 66

Old Telephone Exchange
Session Street
10.00-5.00



Happy Days

www.renateheath.co.uk

David Henderson

Venue 64

New Town Hall
Session Street
10.00-5.00



East

www.davidhendersonart.co.uk

R

Blue Door Gallery

Venue 67

5 Charles Street
10.00-5.00



*Paintings, Prints,
Jewellery*

www.bluedoor-gallery.co.uk

Kirsten Boston

Venue 64

New Town Hall
Session Street
10.00-5.00



East

www.hangar-framing.com

R

Martin F Salvage

Venue 68

11 James Street
10.00-5.00



*Doodles of
Doodles & More*

Leanne McKend

Venue 65

New Town Hall
Session Street
10.00-5.00

*Textile Art; Hand-
Crafted Jewellery*



www.leannemckend.co.uk

John Gifford

Venue 69

Rear of
11 James Street
10.00-5.00



www.giffordarts.co.uk

Kathryn Neale

Venue 70

Scout Hall Annexe
5 Backgate
10.00-5.00

Glass by Kathryn

www.glassbykathryn.com



Jennifer Thomson

Venue73

Garage
James Street
10.00-5.00
*New Paintings-
City Life*

www.jenniferthomson.com



R

Lindsay Kilpatrick

Venue 71

7 Brown's Close
10.00-5.00



Open Art Exhibition

Venue74

Primary School
James Street
10.00-5.00



Wendy Sabine

Venue 72

Tolpien
Routine Row
10.00-5.00

*Miniatures
Small Paintings
Painted Jewellery*

www.wendysabine.com



R

Ann Wegmuller: *Invited Artist*

Venue75

Lesser Church Hall
10.00-5.00



R

Anne E Dunlop

Venue73

Garage
James Street
10.00-5.00
*Awash with
Colour*

www.annedunlop.co.uk



Capability
Scotland

Venue 76

Church Hall
10.00-5.00

*A Little Bit
Different*

www.capability-scotland.org.uk



Exhibiting Artists

Morag Muir

Venue 76

Howff
Church Hall
10.00-5.00
Eastern Skyline

www.moragmuir.com



R

Tom Allan

Venue 79

27 James Street
10.00-5.00
*New Paintings
& Sculptures*

www.tom-allan.co.uk



Tea Cozy Tea

Venue 76

Kitchen
Church Hall
10.00-5.00

Creative Cozies



Georgie Young

Venue 80

Jennie's Cottage
Marygate
10.00-5.00

A Pittenweem Mix

www.georgieyoung.co.uk



Sheila Caldwell

Venue 77

30 James Street
10.00-5.00

Melange

www.sheilacaldwell.co.uk



R

Poppy Cyster

Venue 81

Gatehouse
Priory Court
10.00-5.00
New for You!

www.poppycyster.com



Avril Cunningham

Venue 78

Garage
30 James Street
10.00-5.00
*Travel &
Adventures*



Colin Ross Jack

Venue 82

Catholic Church
Milton Place
10.00-5.00
Except Sunday
Oils Revisited

www.colinrossjack.co.uk



Mac Donald



Venue 83

18 Milton Place

10.00-5.00

Paintings

& Pottery

www.artdonald.com

Pauline
Austin



Venue 86

22 Abbey Wall

Road

10.00-5.00

www.paulineaustin.co.uk

Sandy Smith



Venue 84

6 St Abb's

Crescent

10.00-5.00

The Wonders of

Wood

Mairi
Clark



Venue 87

48 Abbey Wall

Road

10.00-5.00

Contemporary

Landscapes

www.mairi.clark.co.uk

R

Margaret Smith



Venue 84

6 St Abb's

Crescent

10.00-5.00

Landscapes, Sea-
scapes & Flowers

Judith
Heald



Venue 88

36 Abbey Wall Road

10.00-5.30

New Work

R

Mary Macduff



Venue 85

18 Braehead Road

10.00-5.00

Energy with Nature

Josephine
Gillespie



Venue 89

6 East Shore

10.00-5.30

People & Places

www.josephinesart.co.uk

David Mackin

Venue 90

10 East Shore
10.00-6.00
Gemstones on the Shore

www.camacjewellery.com



Cheryl D Brain

Venue 94

15 East Shore
10.00-5.00
Marrakesh to Moscow



Sheila Tocher

Venue 91

2 The Gyles
10.00-6.00
A Journey through Colour



R

Jo Macfarlane

Venue 94

15 East Shore
10.00-5.00

Mixed Media Still Life



www.jomacfarlane.co.uk

Keiko Mukaide: *Invited Artist*

Venue 92

Old Men's Club Harbour
10.00-5.00

Still Thinking of You



Betty Macfarlane

Venue 94

15 East Shore
10.00-5.00

Mixer Maxter



Kaneyuni Shimoosako: *Invited Artist*

Venue 93

Outer Pier Harbour
10.00-5.00

Nature/Cycle



Clare Parker

Venue 94

15 East Shore
10.00-5.00

Contemporary Jewellery



Funky Scottish



Personalised ceramics, giftware, paintings and cards by **Karen Edward**
Felted puffins, scarves and jewellery created by artist **Linzi Knox**
Embroidered textiles, brooches and cards by artist **Moira Anne Dickson**

Venue 13 41 High Street 10.00-6.00

www.funkyscottish.co.uk

The Little Gallery



Rosemary Bassett experiments with a variety of mixed media, beeswax, oil and collage to obtain richly textured paintings.

Michael Ewart paints exclusively in oils; his works are influenced strongly by early 20th century painters.

Venue 16 20 High Street 10.00-5.00 Sunday 2.00-5.00

The Outbye Gallery



Dawson Murray



Liz Murray

The **Outbye Gallery & Ovenstone Framing**, just outside Pittenweem, is owned by artist and framer Lesley Kamel. The gallery features recent works by The Artists Lunch:

**Alan Beveridge Barbara Robertson Dawson Murray Liz McCarthy
Liz Murray Mike Turpie Ruth Walker**

Venue 60 3 School Drive Ovenstone 10.00-5.00 www.theoutbyegallery.com

Ovenstone Artists Studios

Gillian Tait



Scott Morris



Joanna Foster



7 local artists' work expressed in a variety of media: wood, stone, metal, oil painting, paper collage, screenprints, monoprints, jewellery and photography.

Joanna Foster Ann Barclay Scott Morris Gillian Tait Duncan Macleod

Venue 61 The Old School House Ovenstone 10.00-5.00 www.ovenstone-artists.co.uk

PAGE Pottery Gallery



Resident potter **Amy Page** will be showing new designs of fine handmade contemporary ceramics and domestic ware. Accompanied by impressionistic paintings of life by **Heather Dawn-Scott**.

Venue 15 49 High Street 10.00-5.30

www.pagepottery.co.uk

Pittenweem Pottery & Art Gallery



Allan Davies



Rosalind Crawford



Tracy McBride

Pittenweem Pottery and Art Gallery offers unique, hand-thrown, hand-painted pottery along with various oil, watercolour and pastel artists with fresh, vibrant, new submissions.

Venue 62 W. Grangemuir Farmhouse 10.00-5.00 www.pittenweempottery.co.uk

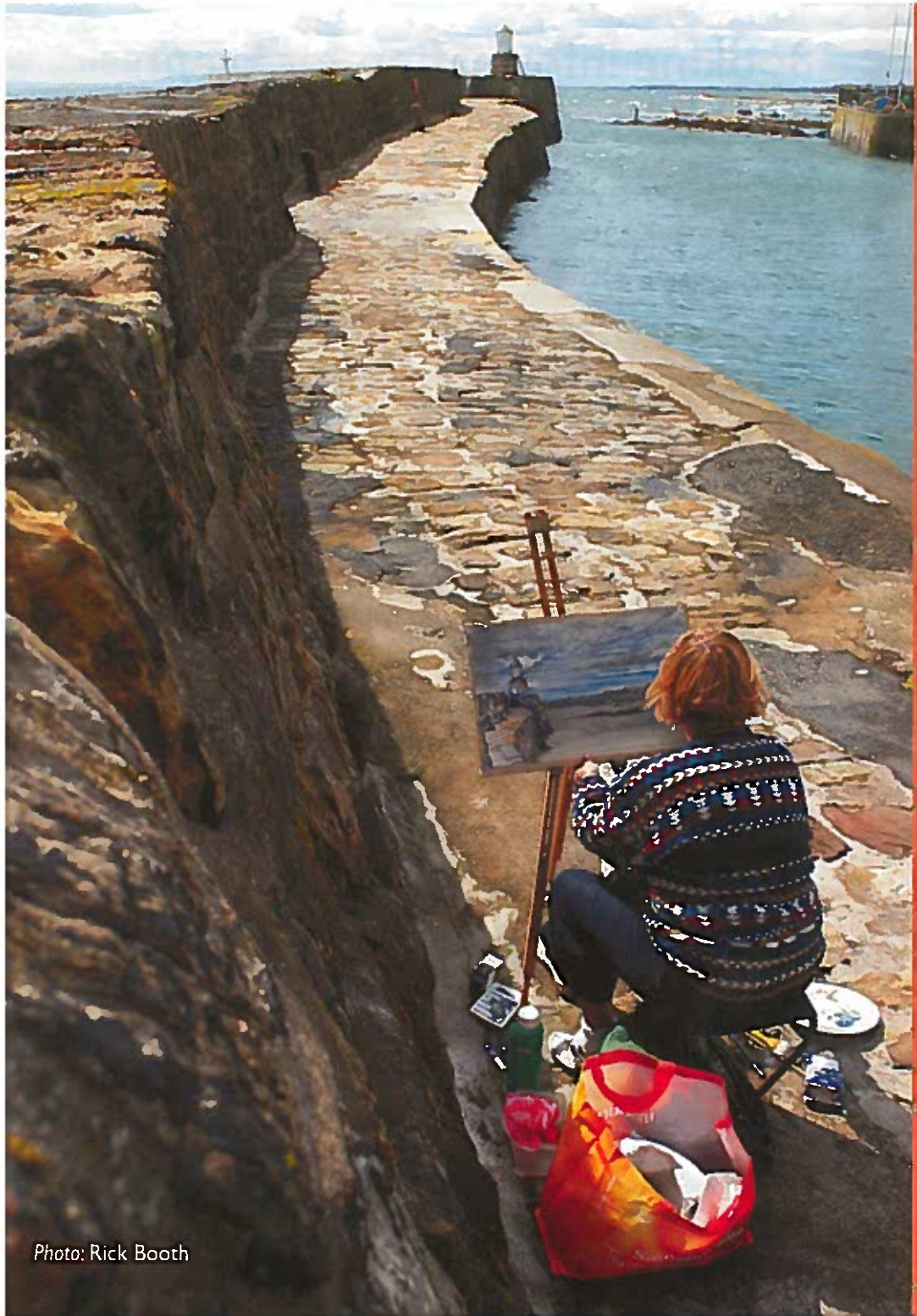


Photo: Rick Booth

Booking Information for Events & Workshops

How to book

At the Box Office:

47 High Street
Pittenweem
KY10 2PG

Telephone:

Box Office: 01333 313 903

Open:

Open daily (except Sundays) 10.00-1.00 & 2.00-5.00 during July

Open daily 10.00-5.00 from Sunday August 1st

Payment can be made by cash or cheques only.

Bookings

Tickets can be booked by phone or post.

Booked tickets can be collected at the Box Office or posted out after a cheque has been received.

Booked tickets must be paid for two days before the event or workshop.

Cancellations have to be made at least 24 hours before the event or full payment is required.

Refunds

The Festival cannot refund returned tickets but we will attempt to re-sell them. Ticket price will be refunded after the Festival if the ticket(s) has been sold.

Concessions

Concessions half price are only available for children under 16 years old.

Not applicable for children's events and workshops.

To avoid disappointment, book early as many events quickly sell out

Please note that there is no cash machine in Pittenweem. The nearest ATMs are in Anstruther. Most galleries and shops will accept cards.

Saturday August 7th

Open Air Painting Competition

Open to everyone and entering is easy.

Participants simply register between 9.00 and 3.00 pm at **The Crooked House 23 Mid Shore Venue 29**. Bring along your blank paper or canvas to have it stamped.

You are free to paint or draw any aspect of Pittenweem, using whatever range of materials you wish.

The finished artworks will be displayed from 4.00pm and judged at 4.30 in the Fishmarket.

Prizes will be awarded

Place: Everywhere

Time: 9.00-3.00

Tickets: On Registration

Prices: Adult - £2.00; 11-15 £1.00; under 11 free



Photo: Rick Booth

This Competition is sponsored by the **Halcyon Gallery in Anstruther**

Dovecot Studios: Talk

Unfinished designed and woven by Naomi Robertson



David Weir, Director of Dovecot Studios, will talk about the work of Dovecot, this year's principal exhibition.

One of the world's leading contemporary tapestry studios and an international centre for tapestry as a modern art form since 1912, Dovecot champions art, design and craftsmanship at the very highest level and across creative disciplines.

The studio building incorporates three museum-quality exhibition galleries and flexible events space, two commercial offices and five residential apartments.

Place: Old Town Hall Venue 1

Time: Please be seated by 1.45pm; Talk 2.00pm

Tickets: Festival Box Office

Prices: £4.00. Booking essential; limited seating



Dovecot Studios
TAPESTRY WEAVERS & RUG TUFTERS

Page 47

Saturday August 7th

Clanadonia

from 6.00 pm at the Harbour



Events

A high energy blend of tribal rhythms, bagpipes and tartan-clad mayhem kicks off the Festival. Clanadonia will be playing down at the harbour outside the Fish Sheds. Afterwards, they will lead the torchlight procession through the village.

6.00 The Rt Hon Sir Menzies Campbell, the Festival's patron, will formally open the festival at the harbour on the Clanadonia stage.

8.00 Sale of torches & lighting

The torches are of the traditional type and cannot be carried by anyone under 18 years of age. Tickets for the torches are on sale beside the Fishmarket at 8.30 priced £4.00. Lighting of torches is done away from the ticket point, just before the procession. Glow Sticks are available for children.

9.15 Torchlight Procession.

The procession makes its way from the Fishmarket, up Abbey Wall Road, Mary Gate High Street, down West Wynd and will be directed back to the Mid Shore.

10.15 approximately Fireworks

This year, for the first time, the fireworks will be held on the Outer Pier at the Harbour.

The display by Blast Design Ltd should last about 15 minutes. The main viewing areas are Mid Shore and the West Braes promontory (i.e. the car park and the path leading up to it).

Donations help to offset the cost of this free event. Please give generously to the collection buckets.

G4S security stewards are in attendance for your safety. You must follow their advice.

Page 48



Sarah Banjo + the Sunday Best



Sarah Banjo is a breath of fresh air to the Fife music scene. Taking inspiration from the East Neuk landscape and character, she deftly twists folk-pop into wonderful new forms and her own compositions are sharp and witty. All delivered with a voice that soars to wonderful heights and a directness that grips her audience. Her band, *The Sunday Best*, comprise local musicians who provide the meat to her melody.

At the festival this year Sarah will be supported by two extra special guests, yet to be announced and not to be missed! The line-up will most certainly provide you with an eclectic mix of music and a great night out, sure to be full of fun.

Preview Sarah's songs at www.myspacemusic.com/sarahbanjomusic

Place: Festival Cafe Marquee Harbour

Time: 7.00pm

Free event: donations welcome

Mary Queen of Scots- The Last Letter with Anna Hepburn

On the eve of her execution, Mary pens her last letter, an act which draws to mind events and emotions from a life filled with happenings.

Anna Hepburn's one-woman show portrays a legendary Scottish figure in a unique and telling production.

This production moves on to the Edinburgh Festival next week.

Place: Parish Church High Street

Time: 7.30pm

Tickets: Festival Box Office

Prices: £8.00



Monday August 9th

A Fantoosh Evening

Scots, spoken by us all (Scots that is), becomes a lively discussion tonight. Through talks, mini-workshops, performances and readings, your hosts show the glorious individuality of the Scots tongue.

So, join tonight's clamjamfry to remind yourself of the language or, find out about it.



Chris Robinson - president of the Scots Language Society, director of Scottish Language Dictionaries;

Pauline Cairns Spetel - senior editor with Scottish Language Dictionaries

Willie Hershaw - poet, teacher, musician

Presented by The Scots Language Society & Scottish Language Dictionaries

Place: Church Hall Venue 76

Time: 7.30pm Refreshments

Tickets: Festival Box Office

Prices: £5.00

Byron-His Life and Loves with Ian Frost

Kellie Castle, a suitably romantic setting, hosts this one-man play based on Byron's own letters, journals and poetry, along with the recollections of many who knew him. For Byron this is a chance to rethink the guilt and the pride he feels in his achievements: above all – to know himself a little better.

Place: Kellie Castle

Time: 8.00pm Interval refreshments

Tickets: Festival Box Office

Prices: £10.00



Tuesday August 10th

Ann Wegmuller: Informal Talk

Ann, one of this year's Invited Artists, will be present to discuss her work

Place: Leser Hall Venue 75

Time: 2.00pm

Free event



Sometimes in April: directed by Raoul Peck

In April 1994, over the course of 100 days, almost 800,000 people lost their lives during a purge by Hutu nationalists against their Tutsi countrymen in the African nation of Rwanda. Based on true events, this gripping and inspiring drama tells the story of two brothers divided along political lines by the conflict and details the extraordinary courage and perseverance exhibited by the people of Rwanda.

Place: Old Church House Venue 36

Time: 7.30pm

Tickets: Festival Box Office

Prices: £5.00



Fence Collective: King Creosote +

King Creosote, brings together a few musical pals from around the globe:

Michael Johnston from Toronto currently recording and touring with Canadian favourites the *Skydiggers*, guests alongside KC in Scottish "supergroup" the *Burns Unit*



Rich Young from Cambridge is a bona fide rock guitar and keyboard legend having toured with *Iron Maiden*, *Eurythmics* and *Rolf Harris*

Jamie Lockhart aka MI MYE hails from Dumess, lives in Wakefield, and sings dyslexic indie love snogs with only a violin accompaniment.

Local lads *Scruff Anster*, *Uncle Beesly Cupar* and *Captain Geeko Ladybank* significantly add to the combined age of what will surely be one of the Neuk's more sober summer evenings.

Place: Church Hall

Time: 8.30pm

Tickets: Festival Box Office & www.fencerecords.com

Prices: £12.00

Wednesday August 11th

Annakate

Very talented....the songs are very interesting, melodic and slightly unguessable, with some quirky, unexpected lyrics. She sings and plays them powerfully and passionately.

Featuring songs from her new CD *What the Wolf Stole*

Place: Parish Church High Street
Time: 6.00-7.00pm
Tickets: Festival Box Office
Prices: £6.00

What the Wolf Stole



MsFits with Fiona Knowles

Ever felt mad enough to kill someone? The queue jumper, the ex who made you feel small and shabby, the council official who cut your services and won't take your calls, the people who never listen to a word you say?

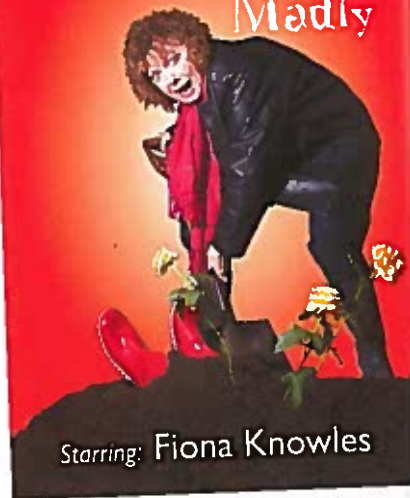
Carer Joyce doesn't give in to those feelings, even when provoked by mad old irritating bats like Bella!

Client Rita doesn't, she hasn't a bad bone in her body.

Bella... DOES... but surely a frail little old lady doesn't have it in her to be a killer, or does she? Don't dig up the shrubbery!

Place: Church Hall
Time: 7.30pm *Interval refreshments*
Tickets: Festival Box Office
Prices: £10.00

Women Behaving... Madly



Starring: Fiona Knowles

Caring, comedy and compost, a brand new, topical funny and poignant one-woman comedy drama

Thursday August 12th

An Evening with Ann Wegmuller

Share Song

Ann invites you into her festival home
enjoy a walk through her exhibition
vibrant and joyful abstract landscapes.

Find out what inspires her to paint and
where her passion lies.



Place: Lesser Church Hall
Time: 7.30pm Refreshments
Tickets: Festival Box Office
Price: £5.00

Poetry Cafe



Julie Briggs

This year's Poetry Café welcomes six
poets from the North East of Scotland.
Part of the group belong to the *Blue Salt
Collective*, a multimedia performing group
but taken together the poets tonight
are diverse, talented and experienced
entertainers.



Judy Taylor



Marina Yule

Relax in the surroundings of the *Cocoa
Tree* but be prepared to be stimulated too.



Haworth Hodgkinson



Rapunzel Wizard



Knotbrook Taylor

Place: Cocoa Tree High Street
Time: 7.30pm
Tickets: Festival Box Office
Price: £8.00: refreshments on sale

Friday August 13th

Sarah Banjo + the Sunday Best



Sarah Banjo is a breath of fresh air to the Fife music scene. Taking inspiration from the East Neuk landscape and character, she deftly twists folk-pop into wonderful new forms and her own compositions are sharp and witty. All delivered with a voice that soars to wonderful heights and a directness that grips her audience. Her band, *The Sunday Best*, comprise local musicians who provide the meat to her melody.

At the festival this year Sarah will be supported by 2 extra special guests, yet to be announced and not to be missed! The line-up will most certainly provide you with an eclectic mix of music and a great night out, sure to be full of fun.

Preview Sarah's songs at:

www.myspacemusic.com/sarahbanjomusic

Place: Festival Cafe Marquee Harbour

Time: 7.30pm

Free event: donations welcome

Anderson String Trio and Yvonne Paterson (flute)



The beautiful drawing room of Kellie Castle is the idyllic setting for this evening's chamber music recital of works by *Mozart, Schubert, Dohnanyi* and *Beethoven*.

Founder members Angus Anderson (*violin*) and Stephen Shakeshaft (*viola*) make up the trio along with Rachel Sanders-Hewett (*cello*). Tonight they are joined by Yvonne Paterson (*flute*).

Place: Kellie Castle

Time: 8.00pm *Interval refreshments*

Tickets: Festival Box Office

Prices: £10.00



Film Night



**The Edge of the World (1937) dir:
Michael Powell**

Mr Powell agreed that "The Edge of the World" would not be a documentary in the strict sense...the film would be as realistic as possible. It was a straightforward dramatic story, with nothing artificial about it. (The Scotsman 1936)

Shot entirely on the wild, windswept island of Foula in the Shetlands, *The Edge of the World* is beautiful, thrilling, and profoundly moving. For cinema great Powell (who went on to make such enduring masterpieces as *The Red Shoes* and *I Know Where I'm Going!*), this was his first important film and one that remained dear to his heart.



Metamorphosis dir: Scott Morris



A short film by Scott Morris based on a story by the well known Fife writer Christopher Rush and starring Rebekah Manley. It is strange what people can believe when a strong women collides with a patriarchal society.



Place: Church Hall
Time: 7.30pm *Interval refreshments*
Tickets: Festival Box Office
Prices: £5.00

Sunday August 15th

Festival Finale

David Boyter Ed Boyter Roland Fraser
Karen Edward

Traditionally, it's the final fling of the Festival week. Local musicians congregate to deliver their toe-tapping Scottish music with a contemporary twist.

Roland Fraser returns with his fiddle, joined by Pittenweem natives David and Ed Boyter (and maybe others).

Sit back, relax and enjoy or, if you are feeling more energetic, take a birl round the floor.

And entralling everyone with her wonderful voice, Karen Edward leaves her painting to take to the stage this evening.



Karen has been singing and performing since the age of eleven. Moving to the Isle Of Mull proved a turning point in Karen's musical journey when she started singing in Gaelic winning a gold medal at The Mod.

Back in Fife Karen performed with *Shindig*. Always torn between her love of music and working as a visual artist, she took a break from music to set up her business, Funky Scottish.

Recently Karen has got back into writing and recording songs, working with Stephen Harrison another artist/musician.

You're welcome to bring a bottle of wine

Place: Church Hall James Street

Time: 7.30pm

Tickets: Festival Box Office

Prices: £8.00

Page 56

Walks

Monday August 9th & Thursday August 12th

Janet Bulloch: Guided walk

Janet Bulloch, a Blue Badge guide who lives and works in the East Neuk of Fife, will take you up and down the wynds from the High Street, through the historic churchyard and down to the harbour.

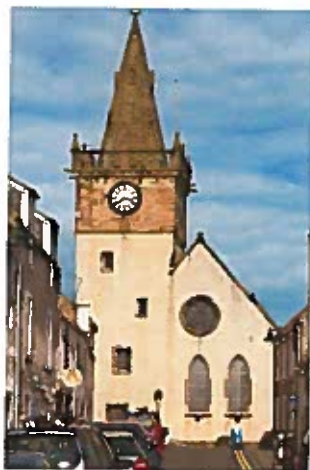
Janet will give commentary on and relate the history of the medieval buildings, the industrial and religious history, the geology and the famous people of Pittenweem.

Place: meet at Festival Box Office

Time: 2.30-4.00pm

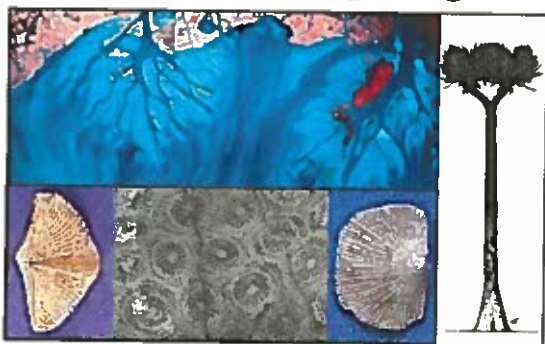
Tickets: Festival Box Office

Prices: £5.00: group limited to 20



Friday August 13th

East Neuk Rocks: a geological walk back in time



The rocks between Pathhead and St Monans are sediments that were deposited in shallow seas and deltas and are some of the best Carboniferous-aged (~320 million years old) rocks exposed in the UK. Join geologist Dr Ruth Robinson of the University of St Andrews for a geo-walk along the shore to look at the rock features that allow geologists to reconstruct what this part of Scotland might have looked like in the Carboniferous.

The trip is suitable for teenagers and adults. Wear sturdy shoes and bring a jacket in case it is cold. The trip will last about 2-3 hours and will finish at St Monans Church.

Place: West Braes shelter next to swing park & car park

Time: 10.00am

Tickets: Festival Box Office

Prices: £5.00: group limited to 20

Workshops

Friday August 6th-8th

Documenting the Festival: led by Rick Booth



This photographic workshop will start on Friday afternoon, to photograph the setting-up of the galleries and opening night; record the events of Saturday, culminating with the night's firework display; wrap up on Sunday morning with a group edit of the material produced, which will then become an exhibit at the festival. You will be given full reign to document every aspect of the festival, learning the rudiments of documentary photography in the process.

The workshop will be using digital cameras so bring a laptop with editing software on Sunday morning.

Maximum 8

Place: Old Church House Venue 36 **Time:** Meet 4.00pm **Price:** £20.00

Saturday August 7th

Open Air Painting Competition

All information about the competition is given on page 47

Monday August 9th

Beading: led by Rohini and Marijke Shrivastava

Have you ever wondered how to use the different tools to create your own unique pieces of jewellery? Then this is the workshop for you.

Rohini and Marijke Shrivastava have many years of experience creating beaded jewellery at their shop where they sell their creations as well as all the products needed to make your own.

Morning session: learn how to turn perfect round loops in wire and pins while making a fashionable charm bracelet using a variety of beads and different types of pliers.

Afternoon session: look at different types of wires and tools to make a 'floating' necklace with matching earrings.

Place: Church Hall Venue 76

Time: 10-12.00 & 1.30-3.30 **Price:** £18.00 per session

All beads & tools supplied



Collage: led by Kate Shearer

Bring along a treasured item (a letter, a ring, a brooch, a child's bracelet) anything you treasure and it will be incorporated into a wall hanging which can be framed at a later date. All additional collage materials will be supplied.

Maximum 6

Place: Pittenweem Pottery Venue 62 **Time:** 2-4 **Price:** £12.00 per session

Tuesday August 10th

Pinhole Photography: led by Scott Morris

Scott will show you how to make your own evocative pinhole images and use a pinhole camera.

Contact Scott on: 07849576193 for more details

Maximum 6 This workshop is for adults



Place: Ovenstone Studios Venue 61 **Time:** 2-4 **Price:** £8.00 per session

Drawing: led by Rosalind Crawford

Bring along a sketch pad and pencils and explore a series of drawing exercises to enable you to feel confident about your own sketches in the future

Place: Pittenweem Pottery Venue 62 **Time:** 2-4 **Price:** £10.00 per session

Wednesday August 11th & Thursday 12th

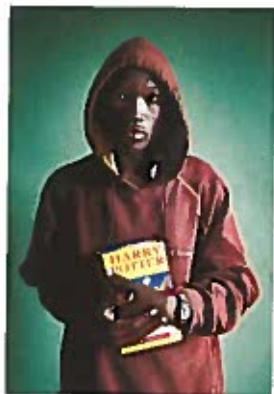
Portrait Photography: led by David Graham

David specialises in portraits usually taken in a short time. He believes that anyone can take a good portrait in 15 seconds and by the end of this practical workshop you will know how.

David's work has been exhibited at the National Portrait Gallery and he has photographed for charities around the world.

Bring a digital camera with memory card

Maximum 10 adults; booking essential
Two sessions available: Wednesday & Thursday.



Place: Old Church House Venue 36 **Time:** 10-1.00pm **Price:** £10.00 a session

Wednesday August 11th

Photography: led by Steve Wright

Bring along a digital camera, memory card and a lot of enthusiasm!! Learn how to get the best out of nature with wonderful country vistas and flora and fauna to capture.

Maximum 6 Beginners/intermediate

Place: Pittenweem Pottery Venue 62 **Time:** 2-4 **Price:** £10.00 per session

Thursday August 12th

Collage: led by Kate Shearer

Bring along a treasured item (a letter, a ring, a brooch, a child's bracelet) anything you treasure and it will be incorporated into a wall hanging which can be framed at a later date. All additional collage materials will be supplied.

Maximum 6

Place: Pittenweem Pottery Venue 62 **Time:** 2-4 **Price:** £12.00 per session

Portrait Photography: led by David Graham

See entry under Wednesday page 59

Place: Old Church House Venue 36 **Time:** 10-1.00pm **Price:** £10.00

Creative textiles She Sells Seashells on the Seashore: led by Maggie Moffat

Maggie's fantastical costumes have been used in past Festival productions. Today, using historical silhouettes, a variety of textures and materials and a liberal sprinkling of imagination and flair, Maggie's recipe is a winner for concocting outfits with a difference!!

Taking inspiration from historical costume and textures found on the seashore, each workshop will explore various sewing skills and techniques resulting in an accessory with a difference!

Bring: a sewing kit; needles; thread; scissors. Fabric is provided.

Two separate sessions

Place: Church Hall Venue 76 **Time:** 10-1.00pm & 2-5.00pm

Price: £15.00 a session **Maximum 6 adults**



Friday August 13th

Drawing: led by Rosalind Crawford

Bring along a sketch pad and pencils and explore a series of drawing exercises to enable you to feel confident about your own sketches in the future.

Place: Pittenweem Pottery Venue 62 **Time:** 2-4 **Price:** £10.00 per session

Drawing & sketching drop-in: led by Keith Robson

Keith has worked as an illustrator for D C Thomson magazines, doing work for a range of their publications.

These two informal sessions on the beach just require you to come along bringing your own art materials.

All ages welcome

Place: West Shore (if wet, Church Hall)

Time: 11-1.00pm & 2-4.00pm **Price:** Donation welcome



Saturday August 14th

Landscape photography: led by Scott Morris

Come and try your hand at landscape photography and learn how to improve your pictures.

Bring a camera - and tripod if you have one.



Place: Ovenstone Studios Venue 61 **Time:** 11-1.00pm **Price:** £8.00



Lux et Obscuritas

Scott has a continuous film loop showing in St Fillan's Cave Cove Wynd, where light and darkness create images which expand and contract time.

A reflective narrative in light and sound, in a place of serenity.

Place: St Fillan's Cave **Time:** Friday & Sunday 3-5.00 **Price:** Donation welcome

Children's Pages

Saturday August 7th

Open Air Painting Competition

Open to everyone and entering is easy.

Participants simply register between 9.00 and 3.00 pm at **The Crooked House 23 Mid Shore Venue 29**. Bring along your blank paper or canvas to have it stamped.

You are free to paint or draw any aspect of Pittenweem, using whatever range of materials you wish.

The finished artworks will be displayed from 4.00pm and judged at 4.30 in the Fishmarket. **Prizes will be awarded**



This Competition is sponsored by the Halcyon Gallery in Anstruther

Place: Everywhere **Time:** 9.00-3.00

Tickets: On Registration **Prices:** Adult £2.00; 11-15 £1.00; under 11 free

Photography Competition: open all week



Sponsored by award-winning photographer Maureen Traquair

Maureen is keen to encourage children's interest in photography. Capture the spirit of this year's Festival at any time during the week and enter your photograph in the competition.

Prizes will be awarded: see entry form

Entry Forms collect & return: Traquair Village Shop & Studio High Street & Festival Box Office

Age group: 6-9 years old and 9-11 years old

Place: Everywhere **Time:** all week **Prices:** Free entry

Monday August 9th

Animation: led by Scott Morris

Video and film artist Scott Morris repeats his popular workshop in animation creation.

Bring a snack & drink

Booking is essential: party limited to 6; age 10 plus

Place: Ovenstone Studios Venue 61 **Time:** 2-4.00pm **Price:** £5.00



Tuesday August 10th

Cartoon character drawing: led by Keith Robson

Session One: 7-11 year old

11.00-12.00pm

Listen as Keith tells an exciting story and then create your own cartoon character based on one of the people in the story.

Session Two: older than 11 years

1.00-2.00pm

Using your imagination, you will invent a character and a situation. Keith will show you what happens next as you learn some cartoon-drawing skills.

All materials will be supplied

Place: Church Hall Venue 76 **Time:** 11-12.00pm & 1-2.00pm **Price:** £5.00



Theatre Odyssey: Cretan Myths

A Storytelling Cycle

Performed by John J. Taylor

in association with Theatre Odyssey

Following on from last year's highly successful *One-Man Odyssey*, Pittenweem performance-storyteller John J. Taylor brings a new series of linked stories, all stemming from Ancient Cretan Civilisation.

Enjoy the dark and beautiful stories of *Theseus and the Minotaur*, trapped in the labyrinth created by the mad inventor, Daedalus, who lost his son Icarus, who flew too close to the sun when they tried to escape from the crazy King Minos. And so on...

These enticing tales are told in the atmospheric setting of Pittenweem's ancient St Fillan's cave: the most labyrinthine space in Scotland!?

A show for young and old alike, one day will follow on from the day before. Turn up to all three sessions, or just pop along to one.

John J. Taylor is the Artistic Director of Theatre Odyssey, a community arts organisation dedicated to promoting Classics throughout the UK. See www.theatreodyssey.com

Place: St Fillan's Cave Cove Wynd

Time: Tuesday; Wednesday; Thursday 2.00pm **Donations welcome**



Wednesday August 11th

Shrink-plastic jewellery: led by Kim Thomson

Session One: age 6+

10.00-11.00pm

Session Two: age 10+

12.00-1.00pm



Come and create your own funky plastic jewellery.

Design, colour and create your own necklace, key ring or phone charm, then watch as it shrinks before your eyes into a gorgeous piece of jewellery.



Place: Church Hall Venue 76 **Time:** see above **Price:** £5.00 per session

Theatre Odyssey: Cretan Myths

See full details in Tuesday page 63

Crinoids & clams: led by Ruth Robinson

Discover ancient fossil sea life on the Fife coast

The rocks between Pittenweem and Pathhead contain fossils of ancient sea creatures and forests that are about 320 million years old.

Come for a walk along the shore at low tide with geologist Dr Ruth Robinson of the University of St Andrews and discover where some of these fossils can be found.

Wear sturdy shoes, bring a jacket in case it is cold, and a bag for all the fossils you find!! The trip lasts about 2.5 hours.

The trip is suitable for ages 7-12 under 10s with an adult; group size 20

Place: West Braes Car/swing park shelter **Time:** 10.00am **Price:** £3.00



Thursday August 12th

Theatre Odyssey: Cretan Myths

See full details in Tuesday page 63

Friday August 13th

Jewellery making: led by Kim Thomson

Session One: age 6+
10.00-11.00pm

Session Two: age 10+
12.00-1.00pm

Come and create your own beautiful beaded jewellery to take away and wear. You can make pretty bracelets and necklaces from a large choice of bead shapes and colours which will be strung onto strong beading elastic or memory wire.



Place: Church Hall Venue 76 **Time:** see above **Price:** £5.00 per session

Drawing & sketching drop-in: led by Keith Robson

Keith has worked as an illustrator for D C Thomson magazines, producing artwork for a wide range of their publications.

These two informal sessions on the beach just require you to come along bringing your own art materials.

For all ages



Place: West Shore **Time:** 11-1.00pm & 2-4.00pm **Price:** Donation welcome





Photo: Campbell McDonald

Food and *Drink*

Cafes & Bars

Festival Café Marquee Harbour

10:00-17:00 some late evenings

Food all day; coffees & teas; licensed

Larachmor Mid Shore

11:00 -23:00 Fridays & Saturday 1:00am

Dish of the Day: local prawns in garlic butter

West End Bar & Gantry South Loan

11:00 - 00:00 Sun 11:30-00:00

Thursday Friday Saturday till 1:00am

Full Meals; good pub grub; beer garden; licensed

Children and Pets welcome

Anchor Inn Charles Street

12-14:00 bar lunches; 18:00- 21:00

Suppers; 11:00- 21:00 snacks, licensed

Sea Beach Last House West Shore

Home baking, teas & coffees

In aid of Pittenweem Parish Church Fund

First Weekend 10:00-16:00

St Andrews Farmhouse Cheese Co

B9171 east of Ovenstone 9:30-17:30

Full Menu available all day

Cafe2u Harbour

Van all week

Great range of coffees & snacks

Heron Bistro & Coffee Shop High Street

Open 10:00 - 18:00

Good Food all day; Licensed

Home-baking

Kellie Castle Tearoom

12:00 -14:00 light lunches

14:00 -18:00 afternoon teas

The Cocoa Tree Shop High Street

10:00-20:00

For all day food, drink, Speciality Chocolates

For Menu see Advert page 70

Fish & Chips Bar High Street

17:00-22:00

Fish & Chips; Chicken & Chips etc

Tea Cozy Teas Church Hall Kitchen

James Street

Sat Sun Wed 14:00-16:00

Coffees; Teas & Lizzies Cup Cakes

Teas at the Catholic Church

Milton Road

11:00-15:00 13:00-16:00 Sunday

12:00-14:00 soup (except Sunday)

Tea, coffee, home baking

Shops

Traquair's Village Shop Market Square

8:00-19:00, Sunday 9:00 -13:00

General groceries, ice cream, cold drinks, snacks and confectionery; wines & local produce

Donald the Butcher High Street

7:30-13:00 & 14:00-17:00 (Sun except)

pies; sausage rolls; cooked meat

Barnett the Bakers High Street

8:00-17:00 (Sun except)

Sandwiches; pies; sausages rolls; cakes, biscuits; coffees & teas

A J Nicholson Mid Shore

10:00-21:00

Ice creams; sweets, hot & cold drinks

CREATIVE SOLUTIONS FOR **PRINT** AND **DESIGN**



WEST PORT
PRINT & DESIGN LTD

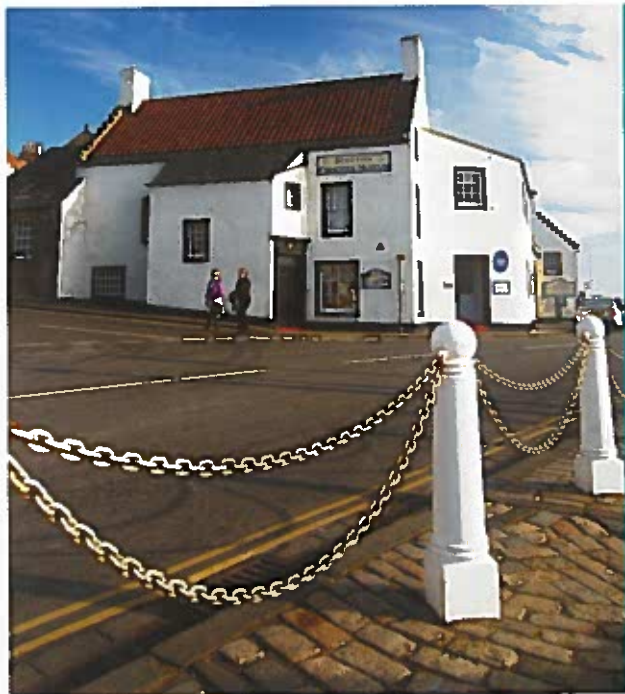
FULL COLOUR PRINTING AND GRAPHIC DESIGN

corporate identity
business stationery
brochure design
promotional materials
large format printing
photography

01334 477135

info@westportprint.co.uk
www.westportprint.co.uk

14a Argyle Street, St Andrews
Fife KY16 9BP



THE SCOTTISH FISHERIES MUSEUM



The Scottish Fisheries Museum tells the story of Scottish fishing and its people from the earliest times to the present

OPEN: APRIL-SEPTEMBER

WEEKDAYS 10am-5:30pm SUN 11am-5pm

OCTOBER-MARCH

WEEKDAYS 10am-4:30pm SUN 12pm-4:30pm

The Scottish Fisheries Museum, St Ayles
Harbourhead, Anstruther, Fife KY10 3AB

Tel/Fax: 01333 310628

E-mail: info@scottishmuseum.org
Website: www.scottishmuseum.org

things we learned as girls

An examination of childhood environmental influence on contemporary visual arts practice

curated by *gayle nelson*

fiona mcdonald
gayle nelson
carolyn scott
liz skulina
kathy watts

14 - 28 august 2010

exhibition opening hours:
tues - sat, 10 am - 5pm
sundays 12noon - 4pm

15 millgate, cupar, fife
KY15 5EG



The Old House Crail

*For interior accessories and
gifts for the home and the
garden*

Open Daily 11.00-5.00 Sunday 12.00-5.00
tel: 01333 450208

9 Marketgate North
Crail

COAST
COFFEE

ILLY Coffee, Snacks, Soup
Cakes & More, Friendly Service
Open every day from 9am-6pm
Sit-in or Take-Away

13 Shore Street Anstruther
t: 01333 311411

For less than the cost of
a daily cup of coffee
you could advertise your
business locally in the
East Neuk Edition



For more details call:

Tel: 01333 313941

Email: email@eastneuk-edition.co.uk

The Cocoa Tree Shop & Café



Café, Chocolate & Take Away

Festival Take Away Menu - to order tel: 01333 312682

SOUP OF THE DAY - £3.50 (Served with buttered Ciabatta roll)

TOASTED PANINI - £5.50

BLT - bacon & tomato served on lettuce

HOUMOUS - with grilled peppers on pesto

CHEESE TOASTIE - Red Leicester cheese with fresh tomato

MOZZARELLA - served with pesto & fresh tomato

SELECTION OF SCONES - £2.80

PLAIN / FRUIT / CHOCOLATE / CHEESE

All served with Butter (& Jam for Plain & Fruit Scones)

MILKSHAKES - £3.00

CHOCOLATE / VANILLA / STRAWBERRY / FRESH BANANA

CHOC MINT

COCOA TREE CHOCOLATE DRINKS

HOT CHOCOLATE- MILK / DARK / WHITE / HAZELNUT - £3.50

LARGE CALIENTE (Chilli Intense Chocolate) - £3.50

COLD CHOCOLATE MILK - £2.50

HOT DRINKS

EVERYDAY / EARL GREY TEA - £2.00

CAPPUCCINO - £2.50, LATTE - £2.50

SINGLE ESPRESSO - £2.00 / DOUBLE ESPRESSO - £2.40

MOCHA - DARK OR WHITE CHOCOLATE - £3.00

CAKES

COCOA TREE'S CHOCOLATE CAKE - £3.90

HOMEMADE CARROT CAKE - £3.50

BROWNIE - £2.20, GLUTEN FREE BROWNIE - £2.50

SINGLE CHOCOLATE CREPE (COLD) - £1.25

Minimum Delivery Order £6.00 - Take away open from 10am to 5pm



Visit us on Facebook at the "Cocoa Tree Café"

Festival Opening - Everyday 10 am to 8pm - Courtyard Seat

9 High Street, Pittenweem, KY10 2LA

tel: 01333 311495 · www.thecocoatreeshop.com



Anchor Inn

42 Charles Street

Pittenweem

Tel: 01333 311326

Open Tuesday - Sunday

Snack Menu from 10.00am
Lunch & Bar Lunch 12 - 2pm
Dinners & Suppers 5 - 9pm
High Teas 5 - 7pm (Friday)
High Teas 4 - 7pm (Sat & Sun)
Bookings for Evenings Essential
Large Beer Garden to Rear
Outside Dining Available
!Great Home-Made Food!



Jennifer Pettigrew Prints

Giclée Prints for every occasion.
Gift vouchers available.

www.jennifer-pettigrew.com



The Spindrift Guest House is pleased to support the Festival and has established a reputation for its unique brand of hospitality, friendly service and freshly prepared local produce.
All rooms are en-suite



Pittenweem Road, Anstruther, Fife KY10 3DT

Telephone/Fax +44 (0) 1333 310573

E-mail: info@thespindrift.co.uk

<http://www.thespindrift.co.uk>

Ken & Christine Lawson



Golden Spoon Award
October 2004
Scott's Foreign Club

The ROCKIES



Golfers Fare menu served all day

11am - 9pm

Lunch - 2 Courses - £8.95

3 Courses - £10.95

12 noon - 2.30pm

High Teas - £9.95

4pm - 6pm

Dinner

7pm - 9pm

Come and enjoy a meal in our new restaurant with uninterrupted views across Anstruther and the Firth of Forth

Ample free parking Open to non-members

Parties also catered for

Bookings advisable

For reservations and enquiries

Tel: 01333 310981

Open 7 days from 10.00am

THE JERDAN GALLERY



Unique Sculpture Garden
Daily 10.30am – 5pm
(Closed Tuesdays)
OPEN DAILY JULY & AUGUST

View @ www.thejerdangallery.com

Frequent exhibitions of
new works by contemporary
Scottish artists

**Sculpture, jewellery, woodwork
ceramics glass &
19th/20th century paintings.**

**42 MARKETGATE SOUTH
CRAIL
Tel 01333 450797**

St Andrews Farmhouse Cheese Company

**Come to visit
Fife's only cheese farm!**



Complete your day at the Festival with a visit
to Fife's only farmhouse cheesemaker.
*Freshly prepared meals, snacks and homebaking
served all day. Choose from our range of speciality
condiments, cheese and gifts to take away.*
Watch the cheesemaking on Monday, Tuesday
and Wednesday.

Ample parking & panoramic views
Festival opening hours 9:30 am-5:30 pm daily
We are situated just north of Pittenweem on
the B9171 Imile and a half east of Kellie Castle.



St Leonards

St Andrews, Fife
www.stleonards-fife.org



Be inspired at St Leonards School...

- Top quality day and boarding education
for boys and girls aged 4 - 19
- "Recognised as Scotland's International
Baccalaureate leader" Scottish, 11/01/10

Come and visit us. For more information call 01334 472126 or
email info@stleonards-fife.org

Estate agents.

Life agents.

Pagan Osborne can help you with every aspect of your life. Our award winning property and legal services combined with our strategic financial advice, can give you a 360° view of the decisions you need to make in life, both now and in the future.

Call us on: 01334 653777 to arrange a free no-obligation meeting.

Email: paganosborne@pagan.co.uk or for more information

visit: www.paganosborne.com



pagan osborne

Legal, financial and property specialists

www.paganosborne.com

Pagan Osborne is authorised and regulated by the Financial Services Authority



The West End Bar & Gantry

32 South Loan Pittenweem Fife KY10 2QB

Tel: 01333 311587

*Crabs, Lobster and lots
of other freshly-cooked food*

Garden available at rear

Booking for Evenings Essential

Art Extraordinary Gallery

Open 1st May to 30th October 2010

Saturday 11.30 - 4.30

Sunday 12.30 - 4.30

Open throughout Pittenweem Festival

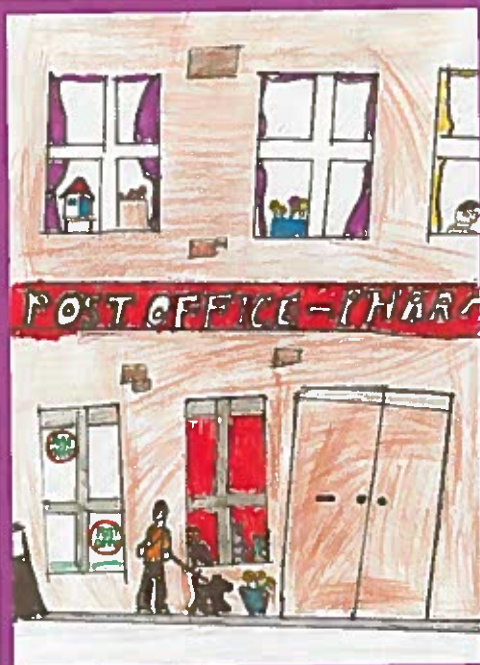


This year the Gallery features illuminated artwork by the 10th-century artist-scribe of the Book of Deer. Also showing : art from the Scottish Collection of Art Extraordinary including new contemporary artists

**The Art Extraordinary Gallery
27 High Street
Pittenweem**

Supported by
The Scottish Arts Council
Registered Charity No: SC027433

www.artextraordinarytrust.co.uk



Pittenweem Pharmacy

NHS Pharmacy Services

Post Office

Newsagent

National Lottery Agent

Cards & Gifts

Market Square
01333 311243

Perthshire Open Studios

11-19 September 2010 Open 10am-5pm

Artists across Perthshire & Kinross open their doors

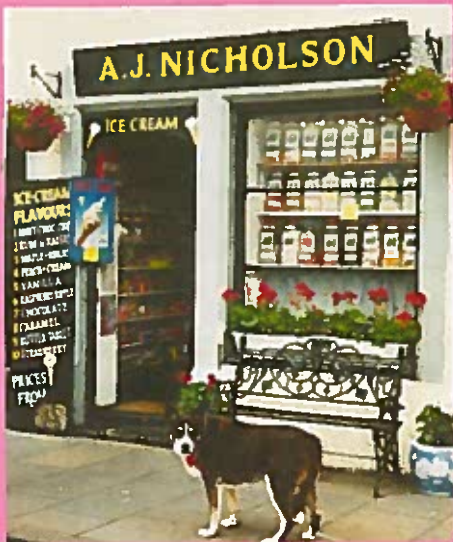
9 days
100 venues
over 160 artists

Come and meet the artists at work
in their own studios

artists
designers
makers
galleries
studios
exhibitions



For full info visit:
www.perthshireopenstudios.com



A. J. Nicholson

17 Mid Shore

10 Varieties Jannetta's Ice-Cream
Soft Whip Ice Cream

160 Varieties of Sweets in Jars
Including 25 Varieties of Boilings
Ferguson's Hand-Made Chocolates

Fudge And Tablet

Children's Sweets

Soft Drinks

Postcards

Adamson's Oatcakes

Summer Hours
11.00am - 9.00pm
Daily

MURRAY DONALD DRUMMOND COOK LLP
 Solicitors and Estate Agents



Modern service. Traditional values

Murray Donald Drummond Cook is a firm of forward thinking solicitors and estate agents. We provide a high quality service to our clients across a full range of legal issues. Mixing modern technology with traditional principles of client care; our personal, property, agricultural and business clients know they can rely on us to find the best solution for them in every situation.

**PROVIDING A COMPREHENSIVE RANGE OF
 LEGAL AND PROPERTY SERVICES**

Anstruther 01333 310481
 St Andrews 01334 477107
 Cupar 01334 652331

mail@mddc.co.uk

www.mddc.co.uk

Fisher Studio & Gallery

11 - 13 High Street Pittenweem KY10 2LA



Exhibitions change throughout the year showing work by Jan Fisher James Fraser Jennifer Pettigrew John Kingsley Robert Cairns Garry Brown George Gilbert and others also limited edition giclee prints ceramics studio glass wood-work & enamelling
 open Easter - New Year
 10 - 5 6 days closed Tuesdays

Check the website for information about our current exhibitions and possible closing periods
 01333 312255 enquiry@fishergallery.co.uk

www.fishergallery.co.uk



The World Famous

Craw's Nest Hotel

ANSTRUTHER

Open Daily for Bar Lunches/Suppers & Restaurant Lunches/Dinner

Fine Selection of Wines, Spirits & Ales

Available Soon - Craw's Nest Best Bitter

The 'Craw's' - the perfect place for every occasion

Tel: 01333 310 691

Heron Bistro & Coffee Shop

15a High Street Pittenweem

01333 11014

OPEN DAILY

**Brunch, Lunch, Bean to cup
Coffees, Teas, Large selection of
Homebaking**

Artwork by Paul Bartlett; Fiona Ross;
Zoe Matham; George Somerville;
R Legg (photography)



THE OUTBYE GALLERY PICTURE FRAMING

Quality, bespoke picture framing at affordable prices. Fast turnaround. Personalised service.

Ovenstone Framing at The Outbye Gallery
3 School Drive, Ovenstone, by Pittenweem, Fife KY10 2RR 01333 313485

Opening hours: Tuesday - Saturday 10am - 5pm
www.theoutbyegallery.com



do8mundos



CLOTHES & CRAFTS

FAIR TRADE & ECO FRIENDLY

OPEN MON-SAT 10.00-5.30

33 Shore Street Anstruther 313420

If you would like to support the Festival by taking out an advertisement contact us on:

info@pittenweemartsfestival.co.uk

cafe2u
the supreme bean machine

The best part of your day!

Great coffee...any time, any place!

Cafe2U, the premier mobile cafe, delivers great quality hot drinks and hot & cold food to delighted customers in any location!



Would you like to try our award winning coffee?

Why not visit Cafe2U Edinburgh North at the Pittenweem Arts Festival during the first 2 weekends of August! Cafe2U will be at Pittenweem harbour to serve delighted customers fresh, gourmet coffee alongside our tasty hot and cold snacks!

Cafe2U Edinburgh North also serves gourmet coffee to delighted customers at businesses in the area on a daily basis! To book your daily stop contact **FAYE** now on **07827 360502** or faye@cafe2u.co.uk.



**Cappuccino - Flat white - Latte - Americano - Mocha - Hot Chocolate
Tea - Espresso - Macchiato - Steamers - Cold drinks - Hot food -
Sandwiches - Crisps - Muffins - Flapjacks - Cakes - Cookies**

FRANCHISES AVAILABLE ACROSS THE UK!

Call us now on **08456 444 708** to book a Cafe2U for your event or to request a franchise information pack



www.cafe2u.co.uk

*The best part
of your day!*

cafe2u



Acknowledgements

Members of the Board of Pittenweem Arts Festival:

Chair: Jean Duncan; Treasurer: Fiona Cathcart; Company Secretary: Graeme Henderson (to March 2010) Kerr Cowan (from May 2010); Tim Fitzpatrick; Stella Ross; Jan-Karel Querido; Minutes Secretary (non-Board member) Ann-Marijke Querido.

Visual Arts Committee:

an open group of local artists who advise the Board on artistic matters.

Thanks to Anne-Marijke Querido for canvassing and thanks to all our advertisers for their support.

The Board of Pittenweem Arts Festival expresses its gratitude to Fife Council in appreciation of the considerable assistance and support given by its officials at the regular liaison meetings. These include Community Services, Transportation Services and Environmental Services as well as officers of Fife Police, Community Council representatives and our local councillors.

Thanks go also to the Harbour Masters and the office of the Fishermen's Mutual Association for their advice and help. For the use of Pittenweem's churches and halls and their enthusiasm in being part of the Festival, the Board again extends its thanks.

Photographs throughout by Rick Booth and Colin Gallacher; credit to the BFI and the Crown Copyright for *The Edge of the World* photographs; Shannon Tofts for Dovecot Studio photographs.

The Board is also grateful for funding from Celebrating Fife 2010 Our Year of Culture.

The Board welcomes the contribution from Pagan Osborne in support of the preview evening.

And most importantly we thank the residents and businesses of Pittenweem who not only provide the volunteer help needed but give behind-the-scenes support in a myriad of ways. The tolerance and patience shown when one's village is turned into a festival cannot be underestimated.

We hope you enjoyed the Festival and look forward to seeing you again in 2011 August 6th-14th

design & layout by bradthinking

Front cover: *Baths and Bathers*
designed by Douglas Grierson
woven by Douglas Grierson David Cochrane Naomi Robertson

