

# 25



£2.00

4th - 12th August

TWENTYFIFTH ANNIVERSARY OF THE PITTENWEEM ARTS FESTIVAL

PITTENWEEM ARTS FESTIVAL 2007

*Elizabeth Blackadder and John Houston are the main invited artists this year and can be found at Venue 1, The Old Town Hall*



## Dame Elizabeth Blackadder RSA

Proteus, Leucadendrons, and Other Plants

Watercolour

23 1/4 x 31 1/2 inches



John Houston RSA OBE

At the Coast, Evening  
1993

Watercolour on Japanese Paper

# A Most Unusual Festival

**T**he Pittenweem Arts Festival is not an arts fair.

It does not invite commercial bodies, or even external art galleries, to participate. It is instead a celebration of art by individuals, by individual artists who wish to display personally their work, and by individual members of the public who wish to meet artists and discuss their work in informal surroundings and be themselves encouraged to express themselves artistically. Now 25 years old, the Festival was one of the earliest of its type in the UK.

Here, art is shown in the houses of Pittenweem, residences which carry the charm and age of a little community set by the sea, presenting not only a close-knit townscape with a full harbour, but also, a seascape of ever-changing light, a townscape enhanced by the fact that Pittenweem has two levels and these are interconnected by narrow wynds which cause their frontage houses to be stepped and varied.

This is a Festival paid for by its artists.

All artists and galleries who have contributed to the Festival's costs display specially designed boards outside their venues. They are also included in this Catalogue/Program.

The Festival is unusual in not depending upon the public purse for its existence. The Company sometimes applies, of course, for specific grants for specific purposes (see Page 2) and is grateful for all assistance offered. Essentially this is an event created by individual artists and funded by them, which makes the Pittenweem Arts Week.....

..... **A Most Unusual Festival.**



*Gratitude is also expressed to the residents of Pittenweem, not only for providing the volunteers who give so much logistical support, but also for showing so much tolerance and patience when their small town is subjected to some twenty thousand visitors in one week each year.*



And this is a festival organised entirely by volunteers. For twenty-five years the community of Pittenweem has provided the human resources necessary and gratitude must be expressed to all those who over the past quarter of a century have given their time and effort to ensure that every year the Festival continues.

*Those artists who have contributed to the costs of the Festival display blue boards with not only their Venue Number but also the Festival Seal.*



# Celebrating 25 Years

by the Chair of the Festival Company, Joyce Laing

**F**estivals, festivals, festivals — there seem to be more and more festivals emerging each year. At a time when every day brings news of another crisis, atrocity, disaster, it seems the human psyche has evolved a counter-balance, for festivals allow us to let our hair down in a secure ambience of *bon-amie*. More importantly, they allow us a pause in our lives in which we can reflect on our way of life and give us time to explore the world as the artist, the writer or the musician sees it. The arts provide nutrient for our psychological and spiritual prosperity.

The first Pittenweem Arts Festival, in 1982, kicked off with flaming torches carried in procession through the village. Would the local population join in, we wondered? They certainly did. I remember well the clamour, to hold a flaming torch and march in procession was a must.

In these early years, various artists, usually sculptors, created some form of wooden, wicker or straw figure to set alight on the sea off West Shore. In 1988, it was the four-hundredth anniversary of the defeat of the Spanish Armada. Some of its vessels apparently went down, off our coast. We persuaded local artist Reinhard Behrens, to create a 12-foot (4 metre) long replica of one of the Spanish galleons, the *Esmeralda*. It was a lengthy and painstaking task and every detail of the rigging, the masts, the crow's nest, was reproduced with great exactitude. This masterpiece was then taken down to the swimming pool.

On that first night, crowds gathered on the West Braes to watch as Reinhard threw his burning torch into the boat. A great cheer went up as the flames leapt from the vessel.

This year, as is now our custom, there will be a magical fireworks display with music to end the procession. This anniversary year we invite you all to forget your worries and cares and instead join us in our celebration of this wonderful and unique Festival.



*The Esmeralda*  
1988

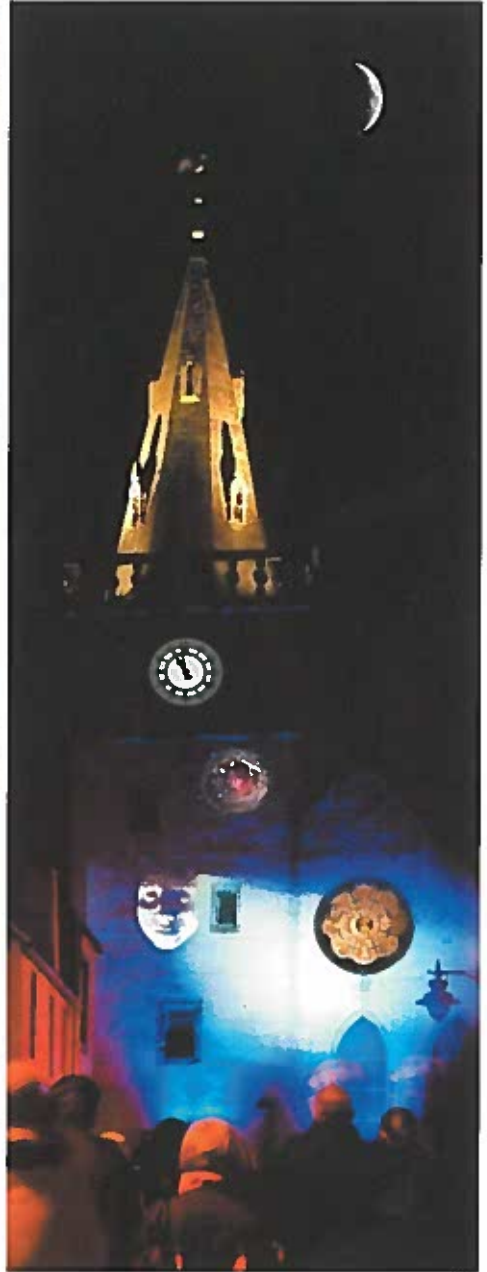
# Celebrating 25 Years Pittenweem by ArtLight

In recognition of the Festival's success over twenty five years, the Arts Development Unit of Fife Council invited the Festival to commission three events over the winter, using light as an art medium. The Festival accordingly commissioned East Neuk artist Tim Fitzpatrick to design and arrange these events, and these were indeed successfully held.

The first occurred in November, using the High Street face of the Parish Church. The second was the creation of an Enchanted Woodland, using the approach to Kellie Castle, where there was held an associated event, a repeat of the very successful Promenade from the 2006 Festival. The Third took place at Easter and was held in the Priory Garden, using the face of what was originally the Dormitory and Refectory.

The Festival expresses its gratitude to Fife Council for this opportunity to extend the Festival beyond the August Arts Week.

*Photographs by kind permission of Scott Morris*



# Celebrating 25 Years

## An ever-growing

These are examples of the development of the programs over the past years showing a single page design to the now 80 page catalogue format. This reflects the growth of the Festival, and the number of artists taking part.

**royal burgh of  
PITTENWEEM**



**Arts  
Festival**

**17-24 July**



**PITTENWEEM  
ARTS FESTIVAL**  
17-24 JULY 1982

**FESTIVAL DANCE**  
with THE ANDY GREIG TRIO  
SATURDAY 17th JULY 8-12pm £5 including buffer

**CLARINET and PIANO RECITAL**  
MARTIN BURRELL and TIMOTHY CAREY  
MONDAY 19th JULY 8pm £2.00

**'AREA ONE' AND FRIENDS**  
CONTEMPORARY DANCE  
TUESDAY 20th JULY 8pm £1.00

**A RECITAL BY EQUALE BRASS**  
WEDNESDAY 21st JULY  
8pm in St Fillans Cave then in  
Pittenweem town hall £2.50 including wine

**'A STORY-TELLING' by CARL MACDOUGALL**  
THURSDAY 22nd JULY 8pm £1.50

**'SCOTLAND IN FOCUS' by CHRISTOPHER MYLNE**  
FRIDAY 23rd JULY 8pm £1.50

**'ON THE MORNING TIDE' by MATT ARMOUR**  
SATURDAY 24th JULY 8pm £1.50

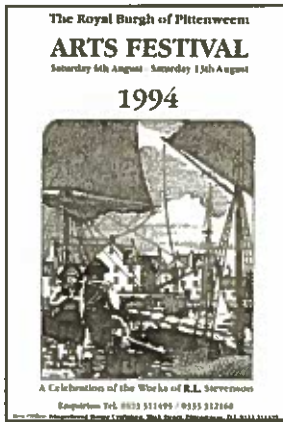
**DANCE WORKSHOPS**  
22nd and 23rd JULY 10-Noon - TRICIA ANDERSON  
22nd JULY 2-4pm - ROYSTON MALDOOM

All events in Pittenweem Town Hall unless otherwise stated  
Further information and tickets from:  
Mrs S. Steller, 7 High St Pittenweem Tel. 0333 311495

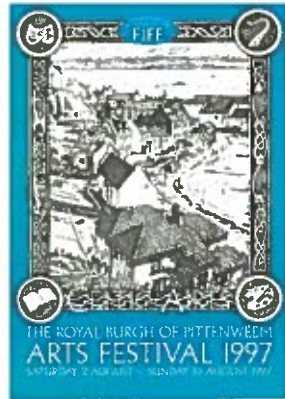
With the success of the Festival, well known Pittenweem artist Reinhard Behrens was invited to design the program covers through the Eighties early Nineties.







As the Festival became more successful, by 1994 the Programme became expanded into a booklet format.



By the later Nineties Reinhard was producing very distinctive covers, all on a Pittenweem theme



Since 2005 the main invited artist has featured on the front cover. This year is an exception to highlight the celebration of the Twenty-fifth year.



*Reeling at the Fishmarket*

# Opening the Festival

Saturday 4th August, at the Harbour

All are invited to assemble for the evening down at the East and Mid Shores, where there will be a marquee, food stalls, bars, and the historic vessel *The Reaper*.

Beside the Fishmarket the **Four Point Turn Ceilidh Band** begins at around 6.30. This is an event for all the family and you can dance your wee hearts out! For free! The music will continue until 9.15.

(In the incredibly unusual event of wet weather, the ceilidh will move inside the Fishmarket.)

The Festival Café Marquee will remain open till late.

At about 9.15 there begins a torchlight procession, led by the City of St Andrews Pipe Band, up Abbey Wall Road, then along the Marygate, Kirkgate and the High Street to the West Wynd, where the procession continues down to the West Shore.

*(The torches are of the traditional type and therefore cannot be carried by anyone under 18 years of age. Tickets for those will be on sale beside the Fishmarket at 8.30, at £2.50 each. There will be Glow Sticks on sale for children.)*

*Torchlight Procession*





*Awaiting the Fireworks at the West Shore*

The Firework display, by Fireworx Scotland, will start at about 10.00pm on the West Braes. The spectacular display should be visible on the other side of the Firth of Forth. It can be viewed either from the harbour wall or from the beach itself. The fantastic pyrotechnics will have co-ordinated musical accompaniment.

The display should finish about 10.30.

*(Volunteers will be around during the evening with blue collecting buckets. Please give generously, as we rely on your donations for the next year's display.)*



*Illustration from the Fisher Studio*

# The Invited Artists

Every year a number of artists are invited to exhibit work at the Festival. Over the years, many major figures in the art world have honoured us by accepting these invitations, including Joan Eardley, John Bellamy, Ian Hamilton Finlay, Oscar Marzaroli, Richard Demarco. Recent years have seen exhibitions by artists such as Philip Reeves, Dawson Murray, Hill Jephson Robb, Joanne Tatham and Tom O'Sullivan.

The Festival invites established, well-known names from Scotland. The Festival also features emerging artists displaying the latest cutting edge art.

In the Pittenweem tradition of looking well beyond our shores, we also have figures from the international art scene.



*One of the venues reserved for Invited Artists:  
(Above) In 2006 Dawson Murray's Exhibition  
The Lesser Church hall, James Street*

## Elizabeth Blackadder

Elizabeth Blackadder left Falkirk High School in 1949 and began to study art at Edinburgh College of Art and Edinburgh University. While there, she developed an extra-mural interest in printmaking, an art form usually left to "commercial art", and attended evening classes in this subject. In this she was ahead of her time, for it was not until the 60's that printmaking became an acceptable part of fine art. An early development in this increasing acceptability was, in 1957, an Arts Council project in which fourteen painters (including Anne Redpath and William MacTaggart) were invited to create lithoprints. Among the invitees was Elizabeth Blackadder.

In 1956 she had married artist John Houston, who came from Fife, and this led to her using its landscape in a commission being handled by a London gallery for the Museum of Modern Art in New York. Her talent in landscape led to her being commissioned in 1962 by the Post Office to design a poster of the dramatic Staithes headland in Yorkshire. That was the year in which she began full-time teaching at Edinburgh College of Art.

Since then she has become a well-known figure in the Scottish art scene, exploring not only lithography but also etching, woodcut, screenprint, and other forms of printmaking, often in the Glasgow Print Studio. When Glasgow hosted in 1993 a World Orchid Conference, the Royal Mail issued a set of stamps bearing her orchid designs.

In 2001 she was appointed Her Majesty the Queen's Painter and Limner in Scotland, and awarded an Honorary Doctorate by the University of Glasgow.



## John Houston

John Houston is connected closely to the East Neuk, having been born in Buckhaven and brought up in Windygates. In 1948 he went to Edinburgh College of Art and then won a post-graduate travel scholarship to Italy.

On his return he became a teacher at the College, and by the mid 60's had work, mainly figurative and landscape, showing in London galleries. Such was the reception of his work that he was invited to the US by the Johnson family (whose domestic and baby products can be found in households globally) and commissioned by them to add to their art collection.

Like many a Fife artist, he had been inspired by the continually changing light on the Bass Rock, but it was in 1974, on a visit to the Isle of Harris, that he began to develop a deeper fascination with weather and landscape mood, producing dark, almost abstract, works, expressed with vivid or sombre colour.

An early influence was the landscapes of Edvard Munch and John Houston adopted the familiar scenes from his own Fife background—landscape and seascape.

Over the years Houston has built up an impressive body of work whilst also continuing to teach at Edinburgh College of Art.

In 2005, the Scottish National Gallery of Modern Art held a retrospective of his art to celebrate his 75th year.



# From the Demarco Archive

Venue 42

The exhibition is curated by Richard Demarco who regards The Demarco Archive not strictly relevant as such but more specifically as an art work in itself—a collaborative work.

The totality is on a gigantic scale; a large part of it, contained originally in over 900 archive boxes, is part of The Scottish National Gallery of Modern Art Collection in the Dean Gallery. Another part, of equal size, is located in The Barn Gallery on Skateraw Farm, which is fifteen miles across the Firth of Forth, within sight of Pittenweem.

It is from this part of The Demarco Archive that Richard Demarco has made a selection from the collection of photographs which he has taken over the past six decades - with a special emphasis on maritime imagery. This also applies to a special section recently added by those artists who have been on two voyages aboard *M.V. Glen Masson* — a classical Scottish-style wooden fishing boat converted to carry twelve passengers and ideal for artists who wish to draw or paint the landscapes and seascapes associated with

the sea-ways of the Firth of Forth and Firth of Lorne.

A smaller version of the exhibition will also be part of the Demarco foundation's contribution to the programme of the official Edinburgh Festival celebrating the Festival's 60th anniversary.

Richard Demarco is perhaps best known for the fact that he collaborated with Joseph Beuys and that, indeed, he persuaded Joseph Beuys to experience Scotland eight times. This resulted in Joseph Beuys making art works inspired by Scotland. He invited Joseph Beuys to experience the barque *Marques*, the replica of Darwin's *HMS Beagle*, and many leading participants and art world luminaries to circumnavigate the British Isles in 1979 on what he called, "the long way round to the Edinburgh Festival".



*Joseph Beuys in Fife*

The group was formed in 1999 from the amalgamation of three Scottish textile groups. Its main aim is to promote a standard of excellence in all aspects contemporary textiles and through broad ranging exhibitions reaching out to a wider audience. The strength of the work, produced by the membership, lies in the technical expertise, diversity of subject and the approach to sign. The group has held several major exhibitions throughout the UK, including the Manus Galleries in Dundee, the Edinburgh City Arts Centre, and the Collins gallery in Glasgow.

In Pittenweem it has chosen the title "Water's Edge", to inspire consideration of how the influence the water, shoreline and sea has on its environment and community. The exhibition ranges from small framed pieces, hanging and free-standing three-dimensional works and fashion items such as textile jewellery, dresses, hats, cushions, bags and greeting cards.

## Edge Textile Group

Venue 10



The work of Takaya Fuji moves along three main trajectories: discourses, physicality and impermanence.... To serve in salt, as he has done, objects that once held life, but no longer live...begs the question of where life has gone and come from. Salt, that necessity of life, in Japan also embodies the essence of purification, and serves perfectly our passage through life.

Gerry Loose, Scottish Poet

Salt is an absolute necessity like air or water for a animal to live.

Salt has been used for preserving food from ancient times.

Salt is an indispensable substance for living beings, and is used for preservation.

These characteristics may be the reason why salt has come to symbolise purification.

Takaya Fuji

The exhibition by Takaya Fuji will be located at six different locations (see map on page 38), six being a number of Japanese good fortune.

## Takaya Fuji

six locations (venue 80)



# Joachim Römer

venue 53

Born in 1957, in Hagen, West Germany, Joachim Römer had developed by 1994 the art of *strassenmullgesichter*, i.e. making assemblages from rubbish found in the street. This approach was extended to flotsam from the Rhine, and he based himself at Köln (Cologne), on its banks. In 2003 he exhibited his art in Edinburgh, displaying flotsam-sculptures from Scotland and the Rhine.

For the Pittenweem Festival in 2006 he created the "Red Room", at the Gyles, in which all four walls and ceiling were covered in Rhine flotsam. This installation was so popular that Joachim has been invited back this year, and he has created another installation on the old Outer Pier.



The installation will be a picturesque scene 7.5 metres long, "painted" with "pigments" of plastic flotsam and jetsam from the Rhine. Created by Joachim and his partner Petr Supplie, this montage/collage/assemblage is called *Sunset in the East*, with its disparate drift fragments becoming a seascape, but its title could just as easily be *This is not a Sea scene*.



Artists impression of the installation — "Sunset in the East"

Clach is a loose association of Scottish sculptures which comes together, in varying numbers and persons, for different events. A leading member is Tom Allan, who has been a frequent exhibitor at the Festival over the years (see venue 32).

Group members will be present in the courtyard behind the Gyles Centre, showing work in progress demonstrating stone carving techniques. Tom Allan, John Bonington (see venue 32), Brunton Hunter, Susheila Jameson and Marina Weir are all taking part.

# Clach Sculpture Group

venue





# Gavin Smith at Kellie Castle

venue 82

This exciting and unique carver is showing finished pieces, works in progress and working drawings.

Gavin Smith came late in his artistic life to wood carving. Brought up in Peterhead, he first became interested in drawing. Later as an apprentice engineer he found that he was able to gain further inside into drawing techniques. He then attended Gray's School of Art in Aberdeen, in the early Seventies.

On graduating he became involved in various art projects, including illustrating for the Aberdeen Archaeological Unit and helping to design, make and construct ceramic murals for Aberdeen City Council. Then he became an art teacher in 1982, teaching drawing, painting and three-dimensional skills. These last led to him one day making a rocking horse for a friend's daughter, and since then has developed an impressive self-taught abilities in elaboration and embellishment, leading to full-time employment as a woodcarver extraordinary. He is based at Cargaff in Strathdon, Aberdeenshire. He frequently works to commission.

**K**ellie Castle and Gardens, is a superb setting. It has a tearoom which is open from 12am-5.00pm with FREE parking during the Festival. Five minutes drive from Pittenweem.



# The Bursary Winners

To celebrate the Festival's 25th Anniversary and to encourage promising new artists, the Trustees have introduced two annual bursaries, consisting of a rent-free venue and waiving of the Registration Fee. Application is open to:

- a final year student from any of the Scottish Schools of Art, whose home is in Fife; and
- an artist who has graduated from a Scottish School of Art within the last five years.

The many applications received for 2007 were judged by Will Maclean RSA RSW RGI, who was the main Invited Artist in 2006, and Marion Leven RSA.

*The venue for the Final Year Student is 23*

*The venue for the Recent Graduate is 38*



## The Final Year Student

### Antonia Gallacher

*"My work explores areas of the past in connection with archaeological evidence and excavation. Drawing mainly from sites which are local to or based in Fife, I use excavation plans, on-site sketches and aerial photography as a basis for detailed, abstract paintings and drawings, generally using acrylic on canvas, or graphite and ink on paper."*

Antonia is from Markinch and is studying for an MA (Hons) in Fine Art at Edinburgh College of Art. She has exhibited in group shows in Edinburgh.



Culhawk Hill, Kirriemuir

## The Recent Graduate

### Marie Louise Wrightson

*"My work is about questioning reality, in my own fanciful and eccentric style. By deconstructing the world around me into base objects, I hope to challenge the viewer's perceptions. The images are personal to me, projecting my innermost feeling, thoughts, and memories."*

Marie Louise is from Auchtermuchty and she graduated from Duncan of Jordanstone College of Art, as a BA (Hons) in Fine Art and a Master of Fine Art. She has exhibited in Edinburgh, Glasgow, Dundee, Aberdeen, Leith and the Kirkcaldy Museum and Art Gallery.



Bubblegum Dreams

# The Galleries of Pittenweem

The last six years have seen the development of Pittenweem as a location for art galleries, containing the greatest concentration in Fife, greater even than St Andrews. This is undoubtedly a consequence of the Festival, but it is also the result of a belief by their owners that art is an increasing aspect of people's lives. Gone are the days when homes displayed little more than inherited etching or a standard print. Today people use original art and limited edition prints to express their interests and personality, maintain memories, evoke visions.

## The Fisher Studio & Gallery



*Wet Sands, Elio  
Jan Fisher*

### The Fisher

Gallery is open all year showing work by a wide range of artists and craft-workers, most of whom are based in Scotland. The exhibition changes five times a year. The gallery has an exclusive range of *giclee* prints from paintings by Jan Fisher, and provides a high quality picture framing service.

See Venue 6 for James Fraser, George Birrell, Jan Fisher, Anna Fisher and other artists

*Edinburgh at 10 to 4  
Jan Fisher*



*The Old Man of the Sea  
James Fraser*



## Art Extraord



The Art Extraordinary Trust displays work of people who have experienced illness and appear to live outside mainstream of society but who through art enriched their own lives and brought a new vision to others. It is often called *Art Brut* or *Outsider* and globally there is a growing awareness of its originality, integrity and rarity.

This year, in addition to Outsider work such as Kenneth Annat, the gallery is again showing the non-Outsider Make.

The gallery (Venue 11) incorporates the old Hedderwick bakery which soothed the future Charles the Second in 1651 (see Page x).

## The Little Gallery



This, at Venue 12, is the oldest gallery in Pittenweem, and its owner, Dr Ursula Ditchburn, was one of the founders of the Festival back in 1982. It sells not only artworks but also antiques and rustica, and for each Festival the gallery is extended by using a most impressive two-level large room overlooking the Firth.

## Funky Scottish



Resident artists Karen Edward (Funky Scottish), Sarah Burnside (stonethrowers' glass), and Kate Shearer (paintings), exhibit their unique work; including individually designed, hand-painted ceramics and sparkling stained glass and jewellery, all designed and produced on site in the Funky Scottish Workshop (Venue 15).

*Sarah Burnside*



*Karen Edward*



## Trinity Arts



Down at the harbour, venue 61 is a gallery and art shop; sadly for the last year here. In September, the gallery is moving to Gateside Mills, in West Fife.

Work exhibited this year is by Sonas Maclean, Sara Mead, Paul A. Wallace and Natalie J Wallace

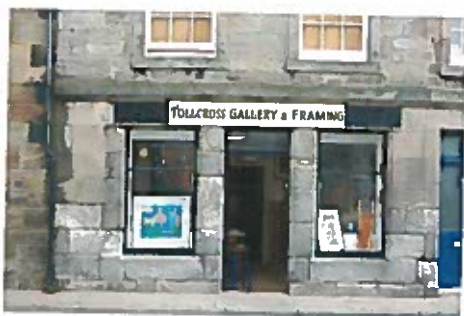


## The Heron Gallery & Bistro



On the sunny side of the street, in Venue 7, there is offered a relaxed atmosphere for the enjoyment of great food and art, with work by George Somerville, Paul Bartlett, Fiona Ross, Pat Kramek, Kim Redpath, Keli Clark, and many more.

## The Tollcross Gallery



We are continually displaying artists works throughout the year offering original paintings, prints, ceramics, sculptures, jewellery and glassware. This Years Festival we will be showing paintings by Fraser Shaw and Willie Hamilton showing bright and vibrant landscapes and seascapes primarily based on Scottish environments using a mixed media of alkyds, acrylics and inks. Their works will be complimented with ceramics by Lucy Neish. Here at our framing gallery we offer a full and comprehensive range of framing moulds, mounts and protective display options. We deliver a friendly and effective consultation offering very competitive rates meeting requirements for all aspects of picture framing to all customers. (Venue 35)



## The Page Po



Page G  
Pottery, v  
is on its th  
the Festi  
be showin  
of conti  
domestic a  
tural cera  
Amy Page  
side other  
artists and



## The Coach House



This gallery in School Wynd, Venue 16, was converted from an old coach house in 2004 by Jean Duncan and Henrietta Newcombe. They specialise in, and design, handmade clothes, knitwear and driftwood mirrors. Ceramics, jewellery and textile accessories are locally made too, with glass and domestic pottery from their list of artistic designers.



*Glassware detail: Dorte Pape*



*Beadwork detail: Roseanne Hoy*

## Ovenstone Studios

For a fifth year, this gallery in the countryside, Venue 81, will show a diverse range of work, including painting, sculpture, drawings, illustration. The artists displayed include Gillian Tait and Scott Morris.



*Gillian Tait*

Scott Morris, filmmaker and photographer, displays his night time shots of East Neuk, and a Mermaids of Fife exhibition. There will also be pinhole camera photos, handtouched limited edition Polaroid transfers, and locally shot films.

## THE ART EXTRAORDINARY TRUST

OPEN WEEKENDS MAY TO OCTOBER 2007

SATURDAY 11.30- 16.30

SUNDAY 12.30-16.30

OPEN THROUGHOUT PITENWEEM FESTIVAL



Changing Exhibitions from the Scottish  
Collection and exciting new works by  
contemporary artists extraordinary

THE ART EXTRAORDINARY GALLERY  
27 HIGH STREET  
PITENWEEM

Supported by  
The Scottish Arts Council

Registered Charity No.SCO27433

## THE Coach & HOUSE Pittenweem



### Designer Craft Gallery

Daily 11-5 Sunday 2-5

Closed Wednesday

School Wynd by Post Office

01333 313700

## HALCYON DAYS

Featuring

**MURIEL BARCLAY**

+ Gallery Artists

Fabulous sculpture garden, 19th/20th century art  
Glass, jewellery, woodwork, ceramics

## *the Jerdan Gallery*

3 AUGUST—9 SEPTEMBER

10.30AM—5PM

OPEN DAILY

Tel 01333 450797

42 Marketgate South, Crail KY10 3TL  
[www.thejerdangallery.com](http://www.thejerdangallery.com)



## FISHER STUDIO & GALLERY



Artist run gallery showing  
paintings, sculpture and craftwork  
by artists working in Scotland

Limited edition giclee prints  
Picture framing service

Open all year 7 days 10 - 5

11-13 High Street Pittenweem KY10 2LA  
[www.fishergallery.co.uk](http://www.fishergallery.co.uk) tel:01333 312255

## HERON GALLERY & BISTRO

15A High Street  
Pittenweem  
Tel: 01333 311014  
Licensed



GREAT ART

GREAT FOOD

GREAT ATMOSPHERE

GALLERY OPEN 10.00AM TO 5.30PM

LIGHT MEALS SERVED  
10.00AM TO 3.30PM

AFTERNOON TEA OR COFFEE WITH A  
SELECTION OF HOMEBAKING AVAIL-  
ABLE FROM 3.30—5.30PM

Carry-Out Coffee and Cakes  
available throughout the day

SELECTION OF LOCAL CARDS  
UNIQUE GIFTS

-Trinity Arts Shop-

**50% OFF**

**Relocation Sale**

We are moving to Gateside Mills  
Gateside - West Fife...  
ask in store or visit  
[trinity4arts.co.uk](http://trinity4arts.co.uk) for details

can you find  
the treasure chest?

Find the treasure box in this  
programme and get anything in the  
shop with a marked price of £7

# The Artists and their Venues

*Some of the artists have kindly donated artworks to be won in a raffle, and these will be displayed in their venues.*

*A donating artist is marked in the following pages by a blue R after the venue address.*

*The sale of these blue raffle tickets helps the Festival's funds, and visitors are thanked for their continued support.*

- |                             |                        |                        |
|-----------------------------|------------------------|------------------------|
| Adam Smith Coll. <b>38</b>  | Gallacher A <b>23</b>  | Open Art <b>38</b>     |
| Allan T <b>32</b>           | Gifford J <b>40</b>    | Ovenstone Stuc         |
| Art Extraordinary <b>11</b> | Gilchrist H <b>34</b>  | Page Gallery <b>2</b>  |
| Bathgate M <b>54</b>        | Graham A <b>46</b>     | Paterson C <b>30</b>   |
| Barclay A <b>42</b>         | Graham D <b>57</b>     | Paterson L <b>75</b>   |
| Bartlett P <b>63</b>        | Green B <b>41</b>      | Pattison H <b>83</b>   |
| Behrens R <b>29</b>         | Heald J <b>48</b>      | Peltigrew J <b>28</b>  |
| Black A <b>69</b>           | Heath R <b>37</b>      | Phipps K <b>41</b>     |
| Blackadder E <b>1</b>       | Heron Gallery <b>7</b> | Read C <b>31</b>       |
| Bonington J <b>32</b>       | Holland P <b>60</b>    | Riley J <b>78</b>      |
| Burnside S <b>15</b>        | Holden M <b>60</b>     | Romer J <b>53</b>      |
| Butler T <b>72</b>          | Houston J <b>1</b>     | Salvage M <b>39</b>    |
| Byers M <b>2</b>            | Hutchison A <b>9</b>   | Scott L <b>76</b>      |
| Cairns R <b>21</b>          | Jack C R <b>19</b>     | Shearer K <b>15</b>    |
| Caldwell S <b>43</b>        | Jenkins S <b>45</b>    | Shepherd E <b>13</b>   |
| Campbell C <b>26</b>        | Kramek P <b>73</b>     | Sim D <b>60</b>        |
| Capability Scot. <b>42</b>  | Kemplay S <b>27</b>    | Smith Gi <b>62</b>     |
| Cheape M <b>68</b>          | Kingsley J <b>41</b>   | Smith Ga <b>82</b>     |
| Clach <b>52</b>             | Lacombe S <b>68</b>    | Smith M <b>47</b>      |
| Clark M <b>49</b>           | Ledward I <b>60</b>    | Smith S <b>47</b>      |
| Coach House <b>17</b>       | Lindsay S <b>73</b>    | Smyth M <b>29</b>      |
| Cockburn T <b>67</b>        | Lowrie J <b>70</b>     | Stoa J <b>65</b>       |
| Coleman B <b>71</b>         | Lowrie K <b>70</b>     | Tait G <b>81</b>       |
| Colville I <b>50</b>        | MacDonald A <b>3</b>   | Thomson K <b>73</b>    |
| Cook A G <b>64</b>          | McEwan D <b>48</b>     | Thorbjorsen I <b>2</b> |
| Cooney A <b>27</b>          | MacIntyre H <b>67</b>  | Thorbjorsen R          |
| Cove J <b>41</b>            | MacIntyre I <b>67</b>  | Tocher S <b>69</b>     |
| Cunningham A <b>43</b>      | Mackin D <b>55</b>     | Tollcross Galler       |
| Cunningham H <b>75</b>      | Mackinnon A <b>42</b>  | Traquair M <b>16</b>   |
| Cyster P <b>8</b>           | Maclean S <b>61</b>    | Trinity Gallery (      |
| Dakin J <b>26</b>           | MacLeod D <b>69</b>    | Tully M <b>5</b>       |
| Dewar J <b>65</b>           | Maclure P <b>74</b>    | Wallace N <b>61</b>    |
| Dryer V <b>78</b>           | McAslan E <b>50</b>    | Watson G <b>22</b>     |
| Duckfield J <b>60</b>       | McGregor L <b>59</b>   | Ward C <b>66</b>       |
| Edge Group <b>10</b>        | McKend L <b>44</b>     | Ward J <b>66</b>       |
| Edwards K <b>15</b>         | McKinnis K <b>70</b>   | Williamson K <b>7</b>  |
| Evans B <b>31</b>           | McStay A <b>56</b>     | Wilson F <b>72</b>     |
| Faulds A <b>77</b>          | Mitchell S <b>18</b>   | Wright G <b>79</b>     |
| Ferguson A <b>30</b>        | Monteith U <b>78</b>   | Wrighton M <b>38</b>   |
| Finley G <b>4</b>           | Morris S <b>81</b>     | Young G <b>36</b>      |
| Fisher Gallery <b>06</b>    | Morrow S <b>33</b>     | Yule L <b>3</b>        |
| Fleming B <b>84</b>         | Muir M <b>14</b>       |                        |
| Fleming J <b>84</b>         |                        |                        |
| Fraser N <b>26</b>          |                        |                        |
| French D <b>26</b>          |                        |                        |
| Fuji T <b>81</b>            |                        |                        |

*For artists exhibiting in galleries, see Pages 22 to*

**1**  
Old Town  
Hall,  
Cove Wynd  
10.00 to 5.00  
Elizabeth  
Blackadder  
Invited Artist



See Page 15

**1**  
Old Town  
Hall,  
Cove Wynd  
100.00 to 5.00  
John  
Houston:  
Invited Artist



**2**  
The Undercroft of the Great House,  
Cove Wynd **R**  
11.00 to 5.00  
Marlene Byers  
Hand woven tapestry.

**3**  
Priorsgait,  
Cove Wynd  
10.00 to 5.30  
Angus L M  
MacDonald  
Response to  
Mood & Light



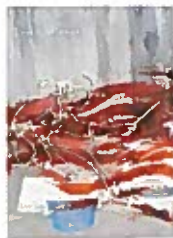
Harbour Moon

**3**  
Priorsgait,  
Cove Wynd **R**  
10.00 to 5.30  
Liz Yule  
Response  
To Mood &  
Light



Sunny Courtyard, Lucca

**4**  
2 High Street  
10.00 to 6.00  
George Finley



Street Drummer

**5**  
The Cocoa Tree  
Shop  
7 High Street **R**  
10.00 to 6.00  
Mary Tully  
Colour, Texture, Light



Anstruther Harbour

**6**  
11 High  
Street **R**  
10.00 to 6.00  
Fisher  
Studio and  
Gallery  
See Page 22



**7**  
19D High Street  
**R**  
15A High Street  
10.00 to  
6.30 pm  
Heron  
Gallery  
and Bistro  
See Page 23



**8**  
19 High Street  
10.00 to 5.00  
Poppy  
Cyster  
Here & Now



Echo

**9**  
**The Cellar,**  
**13B Water Wynd**  
**10.00 to 5.00**  
**Anita E Hutchison**  
**Threads of Memory**

*Thread of Life*



**14**  
**The Old Unicorn,**  
**2 Brown's Close R**  
**10.00 to 5.00**  
**Morag Muir**  
**Looking East**

*Indonesian Puppet*



**10**  
**Kellie Lodging, High**  
**Street**  
**10.00 to 12.30; 2.00 to**  
**4.30**  
**Edge Textile**  
**Group**  
**Invited Artists**  
**Waters Edge**

See Page 17



**15**  
**41 High Street**  
**10.00 to 12.30; 2.00**  
**to 4.30**  
**Funky Scottish**  
**Workshop**

See Page 23



**11**  
**27 High Street**  
**10.00 to 5.00**  
**Art**  
**Extraordinary**  
**Gallery**

See Page 22



**16**  
**The Vennel, 4**  
**Market Place**  
**10.00 to 5.00**  
**Maureen**  
**Traquair**  
**Form + Fancy**



**12**  
**The Little Gallery,**  
**20 High Street**

See Page 23



**17**  
**School Wynd**  
**10.00 to 5.00**  
**The**  
**Coach**  
**House**  
**Gallery**

See Page 25



**13**  
**37 High Street**  
**R**  
**10.00 to 5.00**  
**Elizabeth**  
**Shepherd**  
**Mostly**  
**Flowers**



**18**  
**Henderson House,**  
**School Wynd R**  
**10.00 to 5.00**  
**Sheila Mitchell**  
**Bright Skies,**  
**Soft Airs**



*Spring Pond, Last Year's Le*

19

**The Store,  
School Wynd  
10.00 to 5.00**  
**Colin Ross  
Jack**  
*Exhibition of  
New  
Paintings*



20

**Old Bake-  
house,  
Bruce's Wynd  
R**  
*10.00 to 5.00*  
**Iain  
Thorbjorsen**  
*Local Scenes  
and Landscapes*



20

**Old Bake-  
house,  
Bruce's  
Wynd**  
*10.00 to 5.00*  
**Ricky  
Thorbjorsen**  
*Sea Shores  
And Local  
Scenes*



21

**9 Bruce's Wynd R**  
*10.00 to 5.00*  
**Robert Cairns DA**  
*Looking Eastwards*



*Capturing Time  
and Place*

22

**12 Bruce's Wynd R**  
*10.00 to 5.00*  
**Gary Watson**  
*Bights & Leads*



23

**The Old Yard, 38  
High Street R**  
*10.00 to 5.00*  
**Antonia Gallacher**



*Culharrow Hill, Kirriemuir*

**Bursary Winner**  
**See Page 21**

24

**47 High Street**  
*10.00 to 5.00*  
**The Booking Office**



**See Page 50**

25

**49 High Street**  
*10.00 to 5.00*  
**The Page  
Gallery**



**See Page 24**

26

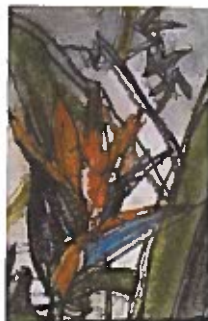
**42 High Street  
R**  
*10.00 to 5.30*  
**Colln  
Campbell**  
*From Spain  
and Beyond:  
watercolours.*



*Vineyards in the Dordogne*

26

**42 High Street R**  
*10.00 to 5.30*  
**Jean Dakin**  
*New Look at People,  
Places and Plants:  
mixed media*



*Botanic Gardens Jottings*

**26**  
**42 High Street**  
 10.00 to 5.00  
**Nicola Fraser**  
*Altered Images:*  
*gouche &*  
*emulsion*  
*on board*



*B Shades*

**26**  
**42 High Street R**  
 10.00 to 5.00  
**Doris French**  
*Colourful Cameos,*  
*Fabric Collage*



*East Green,*  
*Anstruther*

**27**  
**50 High Street**  
 10.00 to 5.00  
**Andrew Cooney**  
*Images of Ice*

*Inspiration in the Ice, stunning pictures from the Arctic and Antarctica, capturing the essence of the landscapes.*

**27**  
**50 High Street R**  
 10.00 to 5.00  
**Suzanne Kem-play**  
*Flower*  
*Paintings*



*May You Never*

**28**  
**52 High Street**  
 10.00 to 5.00  
**Jennifer Pettigrew**  
*Colour for Sale*



**29**  
**7 Calman's Wynd**  
 10.00 to 5.00  
**Reinhard Behrens**  
*Naboland: The Viking Connection*



**29**  
**7 Calman's Wynd**  
 10.00 to 5.00  
**Margaret L Smyth**  
*Matinee (Recent*  
*Paintings)*



*Jealousy*

**30**  
**59 High Street R**  
 10.00 to 6.00  
**Anne E Ferguson**  
*Element*



*Stained Glass Panel*

**30**  
**59 High Street R**  
 10.00 to 6.00  
**Carol Paterson**  
*Elements*



*Harbour &*

**31**  
**64 High Street R**  
 10.00 to 6.00  
**Cath Read**  
*Coastlines,*  
*Landlines,*  
*Skylines*



*Nightfall, Pitt*

(And see Page 70)

31

4 High Street *R*

10.00 to 6.00

Bryan Evans

*Light and Shadows*



32

Old Coal Yard,

66 High Street

10.00 to 5.00

Tom Allan

*Hand, Light, Stone*



32

Old Coal Yard,

66 High Street

10.00 to 5.00

John Bonington

*Hand, Light, Stone*



33

1 West Braes *R*

10.00 to 5.00

Suzi Morrow

*The Journey*



*Self Portrait*

34

The West End Bar,  
South Loan

10.00 to 6.30

Hamish Gilchrist

*Metal Sculpture*



*Feeding  
Time*

35

2 Tollcross *R*

10.00 to 5.00

Tollcross

Gallery

and

Framing



See Page 24

36

7 Bruces Wynd

10.00 to 5.00

Georgie Young



37

Old Telephone

Exchange,

Session Lane *R*

10.00 to 5.00

Renate Heath



38

Primary School, James Street

10.00 to 5.00

The Open Art Exhibition

Here is made available hanging space for artists to each hang one or two paintings (in any medium) which can be seen and bought by the public. See Page 44

38

Primary School,  
James Street *R*

10.00 to 5.00

Marie Louise

Wrighton

Bursary Winner

See Page 27



*Bubblegum*

**38**  
**Primary School, James St.**  
*10.00 to 5.00*  
**Adam Smith College**

*An eclectic mix of work in a variety of media by students in the College's Special Programmes Section*

**39**  
**11 James Street R**  
*10.00 to 5.00*  
**Martin F Salvage**  
*Whimsical wackiness at its Best!*

*"When Vincent went to Lunch..."*



**40**  
**Backgate**  
(opposite 6b)  
*10.00 to 4.30*  
**John Gifford**  
*Light in Landscape*

*Boats at Rest*



**41**  
**6a Backgate**  
*10.00 to 5.00*  
**Jack Cove**

*The Crags*



**41**  
**6a Backgate**  
*10.00 to 5.00*  
**Bella Green**

*Tuscan Storm*



**41**  
**6a Backgate**  
*10.00 to 5.00*  
**John Kingsley**

*Jetty*



**41**  
**6a Backgate**  
*10.00 to 5.00*  
**Karen Phipps**

*Moonlight Canyon*



**42**  
**Church Hall, James Street**  
*10.00 to 5.00*  
**Capability Scotland: Upper Springland Artists**

*Glittering Textiles, Scary Fairies, and Magical Castles*



**42**  
**Lesser Hall, James Street (Church Hall)**  
*10.00 to 5.00*  
**From the Demarco Archive Invited Artist**

See Page 16



**42**  
**Church Hall, James Street (upstairs) R**  
*10.00 to 5.00*  
**Anne Barclay**

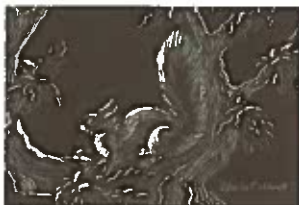




**42**  
Church Hall,  
James Street  
(upstairs) **R**  
10.00 to 5.00  
Amanda  
Mackinnon



**43**  
Abbotsford, 30  
James Street **R**  
10.00 to 5.00  
Sheila  
Caldwell  
*Whimsical  
Nature*



**43**  
Abbotsford, 30  
James Street **R**  
10.00 to 5.00  
Avril  
Cunningham



*Wishing Summer Days*

**44**  
The Rowans,  
4 Milton Place  
10.00 to 5.00  
Leanne McKend  
*From Ship to Shore*

*Dusk over  
Ardross*



**45**  
18 Milton Place **R**  
10.00 to 5.00  
Sue Jenkins  
*Travels with my Brush*

*Watercolour landscapes and flowers from  
Britain and Spitzbergen—mountain, trees,  
flowers and polar bears.*

**46**  
6 Kirkclatch Court  
10.00 to 5.00  
Andy Graham  
*Sultry Argentina,  
Tranquil East Neuk*



**47**  
6 St Abbs Crescent  
10.00 to 5.00  
Margaret Smith  
*Landscapes  
and Flowers*



*A Winter Walk*

**47**  
6 St Abbs  
Crescent  
10.00 to 5.00  
Sandy Smith  
*From Trees  
to Gifts*



**48**  
36 Abbey Wall Road **R**  
10.00 to 5.00  
Donald MacEwan  
*Kyoto to Auld Kirk: photographs*

*Images captured by the St Monans Minister,  
from Asia, Africa, America, Europe — of  
temples, markets, landscapes, tuktuks, lions,  
dawns, women, doors, ruins, parishioners, etc.  
All proceeds to St Monans Kirk*

**48** 36 Abbey Wall Road  
10.00 to 5.00  
Judith Heald  
*New Work*



**49**  
**48 Abbey Wall Road**  
*10.00 to 5.30*  
**Mairi Clark**  
*Contemporary Land and Sea Scapes*



**50**  
**Gyles House (Side), East Harbour R**  
*10.00 to 5.00*  
**Isabella Colville**  
*Still at the Edge*



**50**  
**Gyles House (side), East Harbour**  
*10.00 to 5.00*  
**Ewen McAslan**  
*Still at the Edge*



**51**  
**The Old Men's Club, The Gyles**  
*10.00 to 5.00*  
**The Pittenweem Rolling Stone**  
*An exhibition*



See Page 46

**52**  
**Behind The Old Men's Club, The Gyles**  
*10.00 to 5.00*  
**Clach**  
*Sculpture in Stone*



**Invited Artists**  
See Page 19

**53**  
**The Old Pier, The Gyles**  
*10.00 to 5.00*  
**Joachim Römer**



**Invited Artist**

See Page 18

**54**  
**The Outer Harbour, The Gyles**  
*10.00 to 5.00*  
**Margaret Bathgate**  
*Polka Dot Harbour*



**55**  
**10 East Shore**  
*9.00 to 6.00*  
**David Mackin**  
*Gems on the Shore*



**56** 20 East Shore  
*10.00 to 5.00*  
**Adrienne McStay**  
*Sensuality within wood and glass*



**57**  
**The Marquee, East Shore R**  
*10.00 to 5.00*  
**David Graham**  
*Photographs*



Look at Me

**58**  
**The Loft,**  
**The Fishmarket**

**Festival**  
**Filmhouse**

**See Page 48**



**59**  
**The Harbourmaster's**  
**Office**  
**(The Granary) R**  
**10.00 to 5.00**  
**Lynn McGregor**  
**RSW**  
**New Landscapes**



*Winter Storm*

**60**  
**1 Mid Shore R**  
**10.00 to 6.00**  
**Jane Duckfield**  
**Colour**  
**in the**  
**Landscape**

*Sutherland*  
*Farmhouse*



**60**  
**1 Mid Shore**  
**10.00 to 6.00**  
**Mark Holden**  
**2007 Impressions**

*Venice Charm*



**60**  
**1 Mid Shore**  
**10.00 to 6.00**  
**Pat Holland**  
**Subtle**  
**impressionist**  
**landscapes**  
**in oil.**



*Poppy Fields in Corbieres*

**60**  
**1 Mid Shore R**  
**10.00 to 6.00**  
**Ian Ledward**  
**New Multimedia**  
**Images**  
*Form with Poplars in*  
*West*



**60**  
**1 Mid Shore**  
**10.00 to 6.00**  
**Dot Sim**

*Dot Sim*  
*Jewellery*



**61**  
**3 Mid Shore R**  
**9.30 to 6.00**  
**Trinity Arts Gallery**

**See Page 23**

*Sunday, Sunday*



**62**  
**Harbour**  
**House, 5**  
**Mid Shore**  
**10.00 to 5.00**  
**Gill Smith**  
**New Work**



**63**  
**8 Mid**  
**Shore**  
**10.00**  
**to 6.00**  
**Paul**  
**Bartlett**  
**Natural Selection**



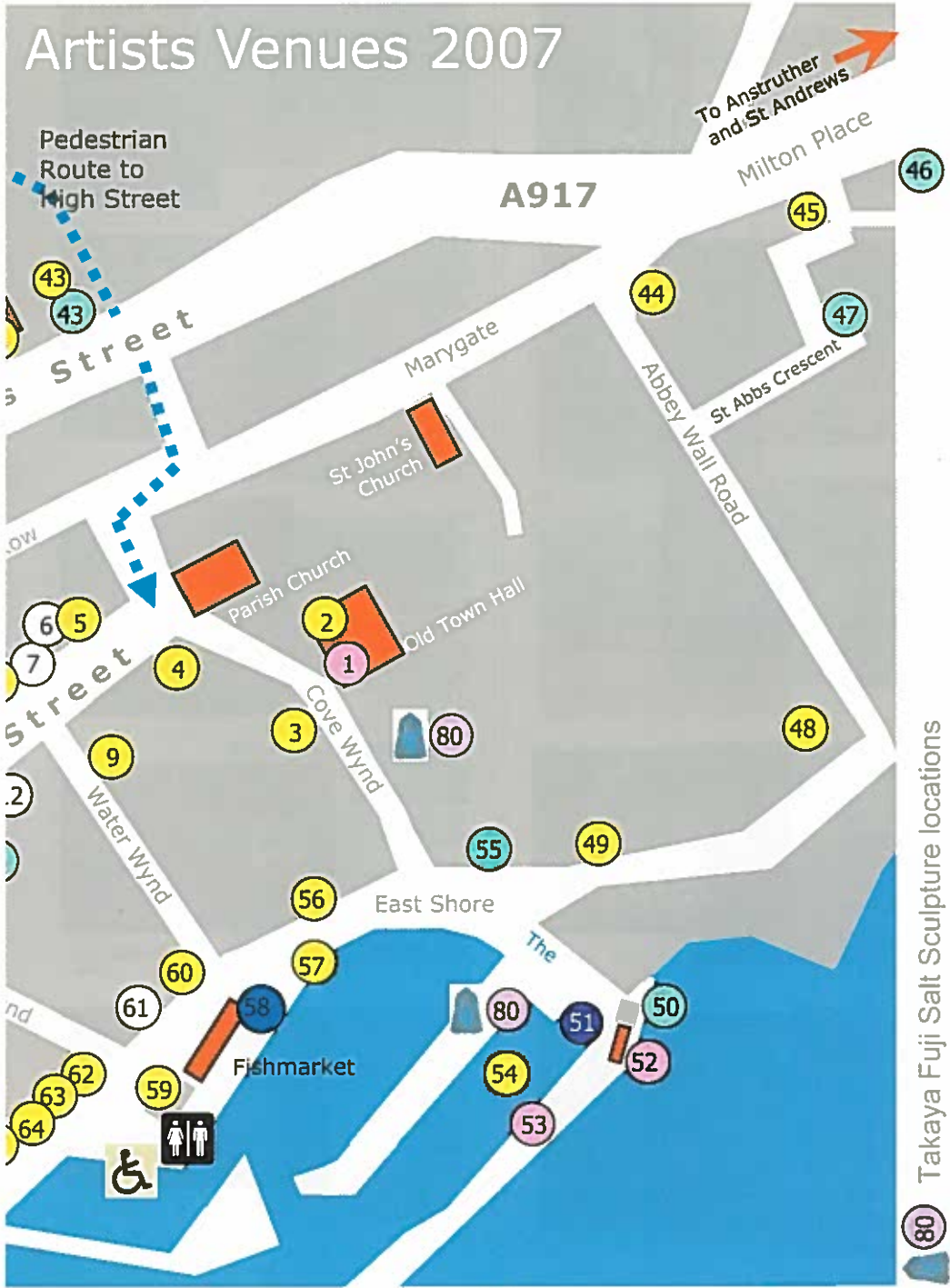
*Golden Plovers over Tires*

○ Gallery   ● Visiting Artist   ● Invited Artist   ● Res



t ● Booking Office ● Filmhouse ● "Stu" Exhibition

# Artists Venues 2007



Takaya Fuji Salt Sculpture locations



64

**9 Mid Shore**  
10.00 to 5.00  
Alan G Cook  
Lanes and  
Landscapes  
in Europe

*Lane in Montrepoli  
North Tuscany*



65

**14 Mid Shore**  
10.30 to 5.30  
Jim Dewar  
The Dundee  
Boys  
See [www.jimdewar.co.uk](http://www.jimdewar.co.uk)

*Nature's  
Tapestry*



65

**14 Mid Shore**  
10.30 to 5.30  
John Stoa  
The Dundee  
Boys  
See  
[www.johnstoa.com](http://www.johnstoa.com)



66

**16 Mid Shore**  
10.00 to 6.00  
James and  
Caroline  
Ward  
Sea Dreams  
Handcrafted  
Jewellery  
and  
Artefacts



67

**The Crooked  
House,**  
23 Mid Shore  
R  
10.00 to 5.00  
Tim Cockburn  
Everyday Life



67

**The Wash House,**  
23 Mid Shore R  
10.00 to 5.00  
Hilke MacIntyre  
Paintings, Linocuts and  
Ceramic Reliefs



67

**The Wash  
House, 23  
Mid Shore R**  
10.00 to 5.00  
Ian  
MacIntyre  
Paintings,  
Linocuts  
And Ceramic  
Reliefs



68

**24 Mid Shore R**  
10.00 to 5.00  
Malcolm  
Cheape  
Recent  
Paintings  
on  
A Maritime  
Theme



68

**24 Mid Shore**  
10.00 to 5.00  
Susie  
Lacombe  
Linocuts  
of the  
East  
Neuk



*Crabs at  
Cree*

69

**26 Mid Shore**  
10.00 to 5.00  
Allan  
Black  
Changing  
Light  
and Sky



*Red Roof*

69

26 Mid Shore  
10.00 to 5.00  
Sheila Tocher  
Look to  
the Sea



*On a Calm Day*

71

35 Mid Shore **R**  
12.00 to 5.00 weekdays  
10.00 to 5.00 weekends  
Kathryn  
Williamson  
Silver Contemporary  
Jewellery



69

26 Mid Shore  
10.00 to 5.00  
Duncan  
MacLeod



70

4 Bruce's  
Wynd  
10.00 to 5.00  
John  
Lowrie  
Scottish  
Landscapes



72

2 Calman's  
Wynd **R**  
10.00 to 5.00  
Tracy Butler  
Paintings  
And Ceramics



72

2 Calman's  
Wynd **R**  
10.00 to 5.00  
Frances  
Wilson  
Porcelain  
Lace



70

4 Bruce's Wynd  
10.00 to 5.00  
Kieran  
McInnes  
Scottish  
Landscapes



*Cloud over*

73

Rock Villa, 42  
Mid Shore **R**  
10.00 to 5.00  
Pat Kramek  
Colours



71

35 Mid Shore **R**  
10.30 to 5.00  
Bobby Coleman  
Glass and Light



*Fused Glass Detail*

73

Rock Villa, 42  
Mid Shore **R**  
10.00 to 5.00  
Sandra Lindsay  
Traditional and  
contemporary  
stained glass



*Aqua*

73

Rock Villa,  
42 Mid Shore  
10.00 to 5.00  
Kim Thomson  
Bespoke  
Contemporary  
Jewellery



Butterfly

74

The Shed, 1 West Shore  
10.00 to 5.00  
(excluding Mon & Tues)  
Pinkle Maclure  
Artisan Stained Glass

Highly unusual, finely detailed window hangings in handpainted, fired and leaded glass. Commissions taken for bespoke architectural projects on any scale.

75

7 West Shore  
10.00 to 5.00  
Heather Cunningham  
Summer Medley



75

7 West Shore  
10.00 to 5.00  
Liz Paterson  
Summer Medley



Harbour

76

9 West Shore R  
10.00 to 5.00  
Louise Scott  
Copper Plate  
Etchings



Seal Rising

77

15 West Shore R  
10.00 to 5.00  
Alan Faulds  
Little Ships



78

16 West Shore  
10.00 to 5.00  
Vicky Dreyer  
Time & Tide



78

16 West Shore  
10.00 to 5.00  
Una Monteith  
Time & Tide:  
Decorative Clocks  
and Kists



78

16 West Shore  
10.00 to 5.00  
Jan Riley  
Time  
and Tide



79

18 West Shore  
10.00 to 5.00  
Gina Wright  
Travels with a  
Paintbox



High Tide  
Pittenweem



**10**  
**Six Locations**  
**Takaya Fuji**  
**Salt Sculptures**

**Invited Artist**



**See Page 17**

**81**  
**Ovenstone Studios**  
**10.00 to 5.00**

**See Page 25**



**2**  
**Shellie Castle**  
**0.00 to 5.00**  
**Clavin Smith**

**Invited Artist**

**See Page 18**



**3**  
**The West End Bar , South Loan/James St**  
**0.00 to 5.30**  
**Clatti Pattison**  
**Living**  
**andscape**



**34**  
**The Box Office**  
**47 High Street**  
**10.00 to 5.00**  
**Barbara Fleming**

**84**  
**The Box Office**  
**47 High Street**  
**10.00 to 5.00**  
**James Fleming**



## The Open Art Venue

The number of artists who wish to participate in the Festival always exceeds the number of venues available, and, moreover, there are many local amateur artists who have not the quantity of work to justify a venue but nevertheless should be encouraged by being given display space.

To solve this problem there is made available hanging space for artists to each hang one or two paintings (in any medium) which can then be seen and bought by the public. The exhibition will be in Pittenweem Primary School Hall, and is looked after by volunteers drawn from the exhibiting artists.

The Festival sees the Open Art Exhibition as means of stimulating fresh talent, and there is an annual prize for "The Most Promising Artist". The winner in 2005, Leanne McKend from nearby St Monans, was so encouraged by her success that she since appeared at the Festival in her own venue. It is hoped that this pattern will be repeated in the future for other new artists. Last year, the 2006 winner was Alice Simpson with "Still Life with Apple and Red Dahlia". Alice has now made the decision to study art full time in Dundee.

Entry forms may be obtained from the Fisher Gallery, Pittenweem, or by telephoning the Festival Booking Office at 01333 313903.



Leanne McKend: Sea Griffin



Alice Simpson: Apple with Red Dahlia

# The Open Air Painting Competition

This traditional and popular event, which welcomes participants of all ages, takes place on the first day of the Festival, Saturday 5th August. All aspiring artists, whether amateur or professional, beginner or long experienced, are invited to produce a painting of Pittenweem, on the spot, on the day.

Entering is simple. Participants simply register at any time during the day up to 4.00, at The Crooked House, 23 Mid Shore. A participant then chooses the view in Pittenweem which is to be drawn or painted (and art materials such as paper, crayons and paint, can be purchased from Trinity Arts, on Mid Shore, throughout the day). The finished artwork will then, by 4.30, be displayed at a location to be announced at Registration, to await the judging and prize giving.



*The Open Air Painting Competition is sponsored by the Halcyon Gallery in nearby Anstruther*



# The Pittenweem Rolling Stone—Ian Stewart

*An Exhibition at Venue 51*



Ian Stewart



Mrs Marianne Meldrum—Stu's cousin still lives at Kirkclatch Cottage, Pittenweem (Below) where Stu was born



Ian Stewart was born at Kirkclatch Farm, Pittenweem on 18th July 1938. As time went on he was simply known, affectionately, as STU.

During the war years, he was brought up on the farm by his uncle and aunt, Jack and Nett. They owned a piano, and Stu had mastered it by the time he returned to his parents in London after the war. There he became a talented Blues player, involved in the emerging Rhythm and Blues scene of the late 50s, but he always returned to Kirkclatch for long holidays.

He was at the birth of the Rolling Stones and if you read Keith Richards quotation, was first at the audition. He was with the Stones until his untimely death in 1985.

The exhibition gives detail of STU's life story, his influence on the Stones, on music and the people around him. He was a gentle shy, talented man loved by all who met him. Jerry Hall said of him after his death:

*It was really sad. Mick loved Stu, everyone loved Stu, and there was nothing to not love. Keith, Charlie—everyone was devastated. It was like losing a brother.*

*They used to come on... whoever it was—and say, "Right fella's, we're ready for you" and it always was, "No we'll go when Stu says." We would never leave the dressing room until Stu came in.*

**Bill Wyman**

# What the band said

*There have been arguments about this ever since we started and it goes on, but in my opinion whose band is it? It's Ian Stewart's band. The Rolling Stones are Ian Stewart's band. He was the first one there at the beginning.*

*Without his extra little bit of push and input in those first few months it would have probably dissolved. In a way you could say that Stu discovered the Rolling Stones, and then forged them. Then came the ultimate irony of not being one. Which is probably better, you know... I mean you come out cleaner that way!*

*My life has been so bizarre and as far as eccentrics are concerned I'm not that favourable... but Stu was a very stabilising influence. The thing about the man was that if the shit hit the fan he was a rock, either with some handy tips or just holding the fort. It's not so much that it had to happen very often, but you knew that he was there.*

*As far as I'm concerned, Stu's still here.*

## Keith Richards

*I remember all the early times rehearsing with Stu... Stu played boogie-woogie wonderfully well and he had this terrific swing to his playing which marks a good boogie-woogie player...*

*He used to call us his "little three-chord wonders", but that was a term more of affection, I think!*

## Mick Jagger

One of Stu's many platinum discs— please note: you need to sell one million copies to acquire a platinum disc.

*The thing with people like Stu and Keith is that the personality is so big that when they play it falls into the area of greatness.*

## Charlie Watts

*He was always sticking up for me. If they were giving me s\*\*\* he'd always protect me, jump to my defence. When I was playing saxophone on songs, everyone else would go, "put it back in a box", and all that, but he would say, "No, give him a chance, give him a break, and let's see how it sounds." And we'd end up using it.*

## Ronnie Wood



# Fishmarket Filmhouse

Venue 58

Showing this year: a Festival of Scottish Short Films

This year's Festival sees the start of the Fishmarket Filmhouse – a film festival within a festival. Here is a chance to take some time out of your hectic exhibition hopping and sample some of the finest work of Scotland's contemporary film makers.

Each afternoon, throughout the festival, the filmhouse will be screening an exciting and wide ranging mix of recent Scottish short films. From the beautiful and the mysterious to the quirky and downright weird, there is a film for everyone. Whether it's drama, comedy, documentary, mocumentary, animation or films for the children, you'll find what you're looking for at venue 58.

Look out for full listings of daily screenings at the Fishmarket Filmhouse – Venue 58 – and at the booking office in the High Street.

*Foighidinn (The crimson snowdrop)*



*Meat the Campbells*



*The Gift*



*Catching the Tide*



*Skeleton Women*



*Cotopaxi*



*Trout*



*Fritz*



*Foighidinn (The Crimson Snowdrop)*



Stills from some of the Films on show at the Fishmarket Filmhouse., include The Crimson Snowdrop, Trout, Meat the Campbells, The Gift, and many, many more

# The Performing Arts

The Festival Week provides a wide range of events from the Sunday to the Sunday.

Tickets for all events (a few are also pay-at-the-door: see events) can be obtained from the Festival Booking Office at 47 High Street (in the Market Square), where space has been kindly made available by Fife Council. These tickets will be available for ordering from Monday 9th July, either by calling at the office or by telephone (01333.313903), during the hours 10.00 to 12.00 and 2.00 to 4.00.

Please note that tickets cannot be paid for by credit or charge card. However, tickets ordered by telephone can be either sent out by post immediately a cheque is received or alternatively can be collected from the Booking Office during the Festival Week (and the office will also be open for such collection from Monday 9th July). These provisions also apply to Children's Events.

At certain events there will be interval refreshments.





# Programme Overview

Day	Event	Ticket	Time	Page
Sunday 5th	Ecumenical Service	Free	3.00	52
	Mazaika (Russian, Classical and Light )	£12	7.00	52
	Antonio de Innocentis (Classical Guitar)	£6	7.30	52
Monday 6th	Rocket 88 (Blues & Jazz)	£15	7.00	54
Tuesday 7th	Organ Recital	Free	12.00	56
	Priory Singers	£5	7.00	56
	Fence (Jazz & Folk)	£12	8.00	55
	Rocket 88 (Blues & Jazz)	£15	7.00	54
Wednesday 8th	Fence (Jazz & Folk)	£12	8.00	55
	Dr Jeremy Cull (Organ Recital)	£5	6.00	57
	Christopher Rush (Books & Film)	£8	7.30	57
Thursday 9th	Fence (Jazz & Folk)	£12	8.00	55
	Annakate (Guitarist & Vocalist)	£5	6.00	58
	MsFITS (Comedy-Drama)	£8	7.30	58
Friday 10th	Billy Kay and Jock Tamsen's Bairns	£12	7.30	59
Saturday 11th	On Thomas Kellie (Talk on Composer)	£3	1.00	60
	Tango Class	£5	3.00	61
	Edinburgh Quartet (Classical)	£15	7.30	60
	Tango & Swing	£8	7.30	61
Sunday 12th	Tribute to Kirk McGeachy (Folk Music)	£8	7.30	61

Sunday 5th



**Ecumenical Service  
with the Salvation Army Band**  
Priory Garden, Cove Wynd  
3.00 to 4.00

**Mazaika**  
Kellie Castle Walled Garden  
7.30 to 9.30  
Tickets £12

*Mazaika* was formed in 1997 and now travels world, giving concerts and cabaret performances as an unusual duo, showing versatility in classical and gypsy and folk music, jazz and opera, world music generally. They appeared at Edinburgh Festival in 2004 and received excellent reviews: "*Sheer heaven—stirring, passionate highly entertaining*".

Violinist Sarah Harrison studied at the Guild School in London where she founded and led the Covent Garden String Quartet. Accordionist tenor Igor Outkine studied classical accordion in his native Russia, where he has performed extensively with his country's folk ensembles and has also acted in Moscow.

Anyone unfamiliar with the Russian classical accordion will be stunned to learn the instrument's true versatility: evoking the streets of Paris, a gypsy campfire, yes, but just as easily pretending to be a chamber orchestra or an organ!



**Guitar Concert by  
Antonio de Innocentis**  
St John's Church, Marygate  
7.30 to 9.30  
Tickets £6

This Neapolitan guitarist returns to the Neuk following his debut in 2004. His repertoire of classical masterpieces and Southern traditional music has charmed listeners with its blend of virtuoso performance, technical assurance and passionate interpretation. "*This guitarist is world class.....*": *Classical Guitar Magazine*.

# Monday 6th to Sunday 12th

The New Makars Trust *in collaboration with* The Fence Collective  
**presents:**

**Songs from the Cave**  
St Fillan's Cave, Cove Wynd  
11.00  
Monday to Friday  
Admission free

Pittenweem has brought creative inspiration to many. At this year's Festival there is an opportunity to join with these established song-writers, with experience of work with The New Makars Trust, to create songs about the many faces of Pittenweem and its historical, religious, cultural, artistic and every day life. A song workshop will convene each morning at 11.00 in St Fillan's Cave, and from there participants can gain inspiration from the ancient home of the saintly man—an iconic figure for his time—and work at creating songs.

**Musical Sketches of  
East Neuk Life**  
St Fillan's Cave, Cove Wynd  
2.00 to 3.30  
Monday to Friday  
Tickets £5

This concert series started at last year's Festival, and proved so successful that Gifford Lind have agreed to run it again. Concerts will feature traditional and contemporary songs, and stories from the East Neuk

**More Musical Sketches  
At The Fishmarket**  
2.00 to 3.30  
Saturday and Sunday  
Admission Free

Gifford Lind and Andy Shanks will perform outdoors at the East Harbour, weather permitting.



*Seating in the cave is limited, so book early!*



**Kenny Anderson – King  
Creosote** – a singer and  
songwriter from Crail who is  
head honcho of the An-  
struther based Fence Collec-  
tive.



**Gifford Lind** - a singer song-  
writer from Dunfermline who  
has led and participated in  
numerous New Makars Trust  
songwriting projects.



**Johnny Lynch – Pictish  
Trail** – a singer and song-  
writer and cornerstone of the  
Anstruther based Fence  
Collective.



**Andy Shanks** is a singer and  
songwriter from Angus who  
has been a prolific writer of  
songs about East Neuk life.

# Monday 6th & Tuesday 7th

Rocket 88  
Kellie Castle Garden  
7.00 to 9.00  
Tickets £15

*Ian Stewart on the piano  
Mike Hogh on the saxophone*



When Ian Stewart, Charlie Watts of Stones and Jack Bruce of Cream wanted play jazz, separately from their famous groups, they chose Rocket 88 as the name of their band. Rocket 88 was the name of a song by Ike Turner and is an American automobile, which is what the Ike Turner song is about.

It is a band which still lives on, even though its personnel have slowly changed over years, and it remains a link with that formative time. Most members do go back to Ian Stewart days, and at least one, saxophonist Mike Hogh will be at Kellie. Another player will be Ben Waters, who replaces Stewart on piano is an internationally known Boogie Woogie pianist, admired by J. P. Holland; in fact, Ben and Jools have played and recorded together.

As part of the Ian Stewart Exhibition, Mike Hogh has brought the band together for two nights at Kellie Castle Gardens to celebrate "Stu" and to remember his life and contribution to music.

Tuesday 7th, Wednesday 8th, Thursday 9th

## The Fence Collective

New Town Hall, Session Lane

8.00 to 11.00

Tickets £12

Tickets can be obtained at the Booking Office and  
online at [www.fencerecords.com](http://www.fencerecords.com)



Fence Records was founded in 1994 by singer/songwriter Kenny Anderson and has since established itself as an independent label, with an artist roster that boasts some of Scotland's most talented musicians. The Fence Collective is a grouping of the label's composite bands and solo artists.

They play together, and on each other's discs, and such is the demand for their appearances that this is the third year in succession they will be at the Festival, appearing on four evenings, from Tuesday through to Thursday! Every style of music imaginable, from rock to pop....!

Monday 6th



The Rose Street Quartet  
The Parish Church  
7.30 to 8.30  
Tickets £5



Founded in 1997 by four then students at the Faculty of Music from the University of Edinburgh, since then the Quartet's pool of players has expanded to encompass around twenty local freelance professionals. The group is in high demand across Scotland and further afield, frequently performing for private events and public concerts. In 2005, their season included a three-day series of chamber works for clarinet and strings, and performances of Dvorak Borodin and Shostakovich String Quartets. I also saw their first outing as the Rose Street Ensemble, with performances of the cream of English string orchestra repertoire performed by a sixty-seven strong orchestra and conducted by James Lowe.

Their Pittenweem repertoire will be:  
*Dvorak: String Quartet in F, Opus 96, The American (1892).*  
*Haydn: String Quartet in G Major, Opus 7, No.1 (1799)*

Tuesday 7th: in St John's, Marygate



Note: a Flower Festival will be on display every day in St John's, from 10.00 to 12.00 and 2.00 to 4.00.

An Organ Recital  
Dr Ursula Ditchburn  
12.00 to 1.00  
Free

The Priory Singers  
7.00 to 8.00  
Tickets £5

A very special concert from an East Neuk choir.

Wednesday 8th

Christopher Rush  
Church Hall, James Street  
7.30 to 9.45  
Tickets £8

East Neuk now has a reputation for producing authors and poets who have recorded past life in Scotland's coastal communities. One such author is Christopher Rush, whose work has been translated into film, specifically the noted *Venus Peter*, which was selected for Cannes in 1989. Christopher Rush was one of the earliest contributors to the Festival and he now returns following the publication of his latest work, *Hellfire and Herring*, which tells of his childhood in St Monans and which was chosen by the BBC as its Book of the Week.

He will talk for 20 minutes, invite questions for 10 minutes, and then there will be shown *Venus Peter*.



SELECTION INSTALLED  
CANNES 1989

An Organ Recital  
by Dr Jeremy Cull  
St John's Church  
Marygate  
6.00 to 7.00  
Tickets £5



Jeremy Cull is Director of Music at the Reid Memorial Church in Edinburgh, and maintains a busy schedule as recitalist, accompanist and arranger. He has performed widely throughout the UK and Ireland. This is his second visit to the Festival. Jeremy's programme on the superb chamber organ in St John's will include music by Handel and J S Bach as well as more recent composers, including Jean Langlais, the centenary of whose birth falls this year.

# Thursday 9th

**Annakate**  
**St John's Church, Marygate**  
**6.00 to 7.00**  
**Tickets £5**



Annakate is a twenty-three year old native to St Andrews. She returned to Andrews in 2006 after four years in Manchester, both studying her degree and playing prolific venues such as The Night & Day Cafe, The Late Room, and countless nightspots including Fallowfield and the infamous Trof Bar.

She has also completed an eleven track album *The Stairwell Recordings*. As a talented pianist, singer and guitarist, Annakate's live shows present a unique sound and an innovative blend of original songs and uniquely adapted covers by the talents of Jeff and Tim Buckley, Johnny Cash, Leonard Cohen, Tori Amos, Muse, Jr. Baez, and plenty more, with the occasional haunting traditional Scottish or North American folk song thrown in. Annakate's aim is to give old, forgotten songs a new lease of life for audiences both young and old.



**The MSFIT Theatre Company present**  
**A Clucking Good Hen Night**  
**Church Hall, James Street**  
**7.30 to 9.30**  
**Tickets £8**

Gale force winds are battering the Riversideshe's a hen, 68 years married, seen it all and doesn't care she terrifies. Lastly there's Function Suite. Inside are not one but two Hen nights. Bride to be Annie she's no spring chicken, third time lucky, could this be? She already has more in-laws than she can cope and they're all here! There's young bride Zoe's Granny (92), office manager Jane (36). She isn't taking her stuff with the other girls. Okay, she hates hen nights, but why can't she keep her eyes off the Striker Fireman?

Events take an unexpected turn and our three heroines are literally swept away! They have to fight for survival or nobody's getting married in the morning! A funny poignant new comedy drama.



Friday 10th

Billy Kay with Norman Chalmers,  
Derek Hoy and Rod Paterson of Jock  
Tamson's Bairns

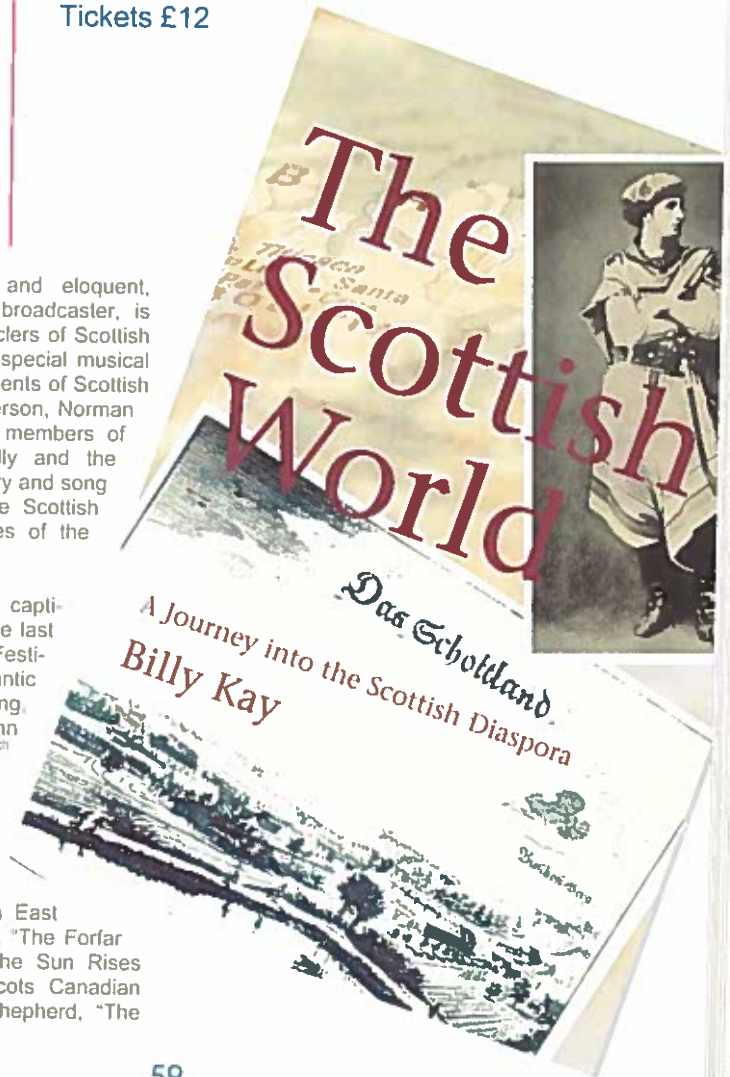
The Scottish World  
Kellie Castle  
7.30 to 9.45  
Tickets £12



**B**illy Kay, charismatic and eloquent, writer, performer and broadcaster, is one of the great chroniclers of Scottish language and culture. In this special musical evening, with the legendary talents of Scottish traditional musicians Rod Paterson, Norman Chalmers and Derek Hoy – members of Jock Tamson's Bairns – Billy and the Bairns celebrate in music, story and song the incredible influence of the Scottish diaspora in far flung countries of the world.

Among the highlights which captivated a sell-out audience at the last Edinburgh International Book Festival were: the French romantic love song with a Scottish setting, "Garçon Malheureux"; the hymn "Alteren's Sacrament" by 17<sup>th</sup> century Norwegian poet Peter Dass, son of Peter Dundas

from Dundee, translated back into Dass's other mither tongue, Scots, and movingly sung by Paterson; the North East song from the Peninsular War, "The Forfar Sojer"; songs of exile like "The Sun Rises Bright in France" and the Scots Canadian classic written by a Border shepherd, "The Scarboro Settlers Lament."



Saturday 11th

**Thomas Erskine, Earl of Kellie,  
Viscount Pittenweem**

A composer both international  
and local to Pittenweem: a lecture by

**Dr David Johnson**

**The Parish Church**

**1.00 to 2.00**

**Tickets £3 and Pay-at-the-Door**

David Johnson is one of Scotland's foremost musicologists and author of the influential book *Music and Society in Lowland Scotland*. He is currently editing Kellie's chamber music and symphonies, as a foundation for a future national edition of Kellie's work, work which is featured in two Festival events (see preceding page and below). Dr Johnson is also a composer in his own right, notably of *12 preludes & Fugues for Piano* and a one-act opera.

**QUARTET  
EDINBURGH**   
[www.edinburghquartet.com](http://www.edinburghquartet.com)

**The Edinburgh Quartet**

**The Parish Church**

**7.30 to 10.00**

**Tickets £15**

Founded in 1959, this is Scotland's premier string quartet and one of the foremost British ensembles. It is based at Napier University and Glasgow University and also plays an important role at Edinburgh and Aberdeen Universities. Their repertoire is rooted in the great classical European tradition, and it is active in the promotion of Scottish composers as well as in commissioning contemporary music. They have toured throughout Europe and North and South America, and also in the Middle East.

The programme includes a tribute to Pittenweem's major contribution to Scottish music, in that there will be played the Quartet in A by Thomas Erskine, Sixth Earl of Kellie (1732—1781). Then there will be played Beethoven's Quartet in F Opus 18 No. 1, McEwan's Suite of National Dances, and Ravel's Quartet in F.

## Saturday 11th



### Tango & Swing Night Church Hall, James Street 7.30 to 10.00

Tickets £8 (*Bring Your Own Bottle*)

Tango is growing in popularity throughout Europe. Each year more dancers join classes and organise *milongas*, the name given to the social dance and a musical style and dance form in its own right. Tonight in Pittenweem, everyone can experience the beauty and innovation of this particularly creative dance style when two of the UK's most popular performers and teachers, Jenny Frances and Ricardo Oria, give exhibition dances. Expressive and spontaneous in performance, their dance has been described as '*stunning work of elegant movement and feeling*'. They have performed in Buenos Aires and travel there regularly to further develop their dance and teaching. Come prepared to dance. Dress is optional but *milongas* can be quite flashy affairs. Most important, wear shoes that allow your feet to slide with leather or smooth soles. High heels optional!

At 3.00pm there will be a **Beginners Tango class for 1 hour (£5.00)**  
Church Hall, James Street.

## Sunday 12th



### A Tribute to Kirk MacGeachy Church Hall, James Street 7.30 to 10.00 Tickets £8

In memory of the ever-popular Kirk MacGeachy, whose concert concluded the Festival for some years (including 2006), this evening will be a repeat of the friendly banter, traditional songs and music, laughter and sing-along to which we had all become so accustomed. The performers have all offered their talents free for this charitable concert, and the proceeds will go to the RNLI Anstruther Lifeboat. They include:

Murray Wilson & The East Coast Haar Band  
Iain White, guitar, and Rolland Fraser, fiddle  
The MacGeachy family singers of  
Alison, Fiona and Donald MacGeachy  
John and Robert Murray  
John Mitchell and Davie Taylor, small pipes  
Toby Kinsella from Quebec, musician and friend.

# Children's Events



## All Week.....A Children's Photography Competition!

*Sponsored by award-winning photographer Maureen Traquair ABIPP*

The objective of this competition is to encourage up-and-coming young photographers, by inviting the submission of photographs taken by them during the Festival Arts Week (4th to 12th August) and having content relevant to the Festival.

Either film or digital cameras can be used.

The competition is open to two age categories: 6 to 9 years and 10 to 13 years inclusive. The entries will be judged by the Sponsor.

Entry forms are available throughout Festival Week from the Traquair Village Shop & Studio 3 Market Place, High Street.

**And remember the Fishmarket Filmhouse!**  
Consult the Booking Office in the High Street to find children's films on the Filmhouse (See page 48)

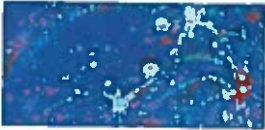
Saturday 4th



### Open Air Painting Competition: See Page 45

9.30 to 4.00 Registration at 23 Mid Shore

Approx. 4.30 Prize Giving



### Opening the Festival: See Page 12

6.30 Ceilidh

10.00 Fireworks

---

## Ruth on the Rocks

Monday 6th



2.00 For children age 8 and upwards, a geology exploration on the beach as far Pathhead Nursery towards St Monans, a fantastic journey through life, time and history. Meet at the Rock Villa (The House on the Rock), 42 Mid Shore, and bring stout shoes, a poly bag, and inquisitive minds. Booking is essential, as the party is limited to 20.

---

## Wild on the Beach

Tuesday 7th



2.30 Deidre Munro from the Fife Coast and Countryside Trust will take adults and families on an exploration of the beach and rocks at the West Shore. With some exceptionally low tides this Arts Week, there should be some interesting nautical finds. Please wear waterproof footwear and dress for the weather! Booking is essential, as the party is limited to 20.

## Wednesday 8th

### Clydebuilt Puppet Theatre in the New Town Hall, Session Lane

**11.00 to 12.00** **Stories of the Native Americans.** Two magical tales for ages 5—12. *How the Raven stole the Moon* tells of how the Raven the trickster, who uses her wits and magic to carry the Moon to its rightful place in Heaven. *The Thunderer* tells of the girl Water Lily who is saved from a forced marriage by a godlike creature who protects good from evil. Tickets at £3 each must be obtained beforehand at the Booking Office.

**2.30 to 4.30** **Shadow Puppet Making:** a fun, imaginative and challenging workshop for children of 8-12 years (no adults needed), including construction, manipulation and creating a simple story to encourage every child to make and manipulate their own puppets. Tickets at £5 each must be obtained beforehand at the Booking Office, as numbers are limited to 25.



## Thursday 9th

### A Treasure Trove of Treats in the Library crafts, stories and activities in Cove Wynd

The Fife Council Library Service has arranged two events in the Library in Cove Wynd. Neither needs adults to stay, but as a number of children will be limited to 15, tickets at £1.50 each must be obtained beforehand from the Booking Office.



**10.30 to 11.30** **Teddy Bears Picnic:**  
For children of 4 to 7 inclusive

**1.30 to 2.30** **Jungle Mayhem:**  
For children of 8 to 11 inclusive.

### Wild on the West Shore

6.00 to 7.15 Deidre Munro from the Fife Coastal and Countryside Trust will take adults and families on an exploration of the beach rocks at the West Shore. With some exceptionally low tides this Arts Week, there should be some interesting nautical finds. Please wear waterproof footwear and dress for weather! Booking is essential, as the party is limited to 20.



Friday 10th, Saturday 11th, Sunday 12th

Beachcombing with Joachim Römer  
Meet at West Braes Play Area  
Each of three Mornings at 9.30

Come and join our Invited Artist (see Page 24) to make temporary beach sculptures from found materials, flotsam and jetsam, on the shoreline. Exercise the imagination, create something from nothing, let the waves take it away, float it out, have fun.

Old clothes, wellies or strong shoes advisable. For all ages, 8 years to 80 years, so parents welcome!

---

Saturday 12th

Musical Stories by Toby Kinsella  
New Town Hall, Session Lane  
10.30 to 12.00 noon  
Tickets £4.00



Toby Kinsella is a multi-instrumentalist, active in children's music since 1974, playing instruments from around the world, telling stories, singing songs with juggling, puppets and masks, in this very exciting interactive show.

Toby has a special rapport with children, exploring with them the music and rhythms of other lands. The young audience get actively involved in making music, absorbing the essence of sound, culture, instruments and performance.

It's a lot of fun!

## Food & Drink





**Larachmohr, Midshore**

11.00 to 9.00 (Sunday 12.30 to 7.00)  
dish of the day/ ploughman's lunch  
coffee & tea/soft & alcoholic drinks

**Heron Gallery, High Street**

Light meals 10.30 to 3.30  
Coffee & tea/and a selection of home  
baking available from 3.30-5.30

**The Marquee at the Harbour**

10.00 to 5.00 (First Saturday later)  
Meals snacks  
Coffees & teas licensed

**West End Bar & Gantry, Sth Loan**

11.00 (Sun 11.30) to midnight (Sat till late)  
full meals chilled buffet  
beer garden snacks

**Kellie Castle**

12.00 to 2.00 (Light lunches)  
Teas 2.00 - 4.30 (last orders)

**Anchor Inn, Charles Street**

11.00 to 9.00 full meals  
12.00 to 2.00 bar lunches  
3.00 to 6.00 suppers

**Fish & Chip Bar, High St.**

10.00 to 11.00  
fish & chips, bachelors & high end  
coffees & teas

**Donald the Butcher, High Street**

7.30 to 1.00 2.00 to 5.00 (except Sun)  
pies & sausage rolls, coffee & teas

**Pathhead Nursery, High St.**

9.00 to 1.00 (except Sundays)  
Food

**Barnett the Bakers, High Street**

11.00 to 6.00 (except Sun)  
pies & sausage rolls, sandwiches,  
cakes & biscuits, coffee & tea

**Village Shop, Market Square**

2.30 to 7.00 (incl Sun) 10.00 to 1.00  
General groceries

**A J Nicholson, Mid Shore**

10.00 to 5.00  
ice creams, sweets, light drinks

**The Cocoa Tree Shop, High St.**

10.00 to 5.00  
Coffee, home baked cakes and scones  
For the full chocolate experience

**Last House on the West Shore**

First Saturday & Sunday 11.00 to 3.00

**Henderson House, School Wynd (Venue 18) Garden**

Teas, Home Baking.  
10.00 to 5.00 (except last Sunday)

**Kellie Castle**

Teas 2.00 till 4.30 (last orders)



## The West End Bar & Gantry

32 South loan, Pittenweem, Fife KY10 2QB  
Telephone: 01333.311587

*Crabs, Lobster and lots  
of other freshly cook food.*

*Garden available at rear.*

***Booking for Evenings Essential***

The East Neuk's centre for TV & Computer Services

# EAST NEUK TECHNOLOGY

*Under New Management*

**WE SUPPLY. INSTALL. UPGRADE  
MAINTAIN COMPUTER SYSTEMS  
CALL OUT SERVICE AVAILABLE**



Software, Accessories,  
Computer Consumables &  
Office Supplies  
Digital Televisions, Aerials,  
Satellite Systems  
Public Internet Access  
PC and MAC servicing

21 Rodger Street, Anstruther

Tel: 01333 313300

e info@eastneuktechnology.co.uk w: www.eastneuktechnology.co.uk

# The Dreel Tavern

**"Come and enjoy our food, wine and fine ales and savour the  
atmosphere in our homely pub"**

**Pub opens daily from 11.00am—12 midnight**

**Meals are served daily**

**Lunch 12—2.30pm (Sunday 12.30—2.30pm)**

**Evening Meals 5.30—9pm**

**Children's Menu available for Lunch and Evening Meals until 7.00pm**

**Stop by any Sunday and enjoy a Sunday roast, linger a little longer and take  
part in our Quiz Afternoon at 3.00pm—lots of fun and prizes**

**Beer garden and Outdoor Dining**

**The Dreel tavern, 16 High Street, Anstruther Tel: 01333 310727**

## A.J.NICHOLSON

17 Mid Shore, Pittenweem

A wide selection of  
**SWEETS AND  
ICE CREAMS**

Open 10 am to 9 pm daily



### SAM THE ICE CREAM DOG 1994– 2007

Sadly Sam the Ice Cream Dog has passed away after faithfully welcoming visitors to Pittenweem for the last 10 years. Sam, a local village character, was a rescue dog homed by John Nicholson. He appeared in pictures, postcards and paintings of Pittenweem, and was known for his friendliness, brightly coloured collar decorations, and willingness to walk with anyone to the beach.

He will be sadly missed by visitors and locals alike.



## Funky Scottish

**STUDIO GALLERY**  
91 HIGH STREET, PITTENWEEM  
01333 312567

**HAND PRINTED CERAMICS,  
JEWELLERY, PAINTINGS, ARTISTS  
AT WORK AND MORE...**

**ALSO FEATURING...**

**stonethrowers glass**  
**CONTEMPORARY STAINED GLASS**

# Art Workshops

**Sunday 5th August**

**Paint your Own**

**Fairy Castle!**

Church Hall, James Street

Tickets £2.00,  
From Booking Office and Pay-  
at-the-Door

Jean Hill BA Hons will hold a workshop in venue 42, among the works of artists from Capability Scotland.

**Tuesday 7th August**

**Pastel Drawing Class**

New Town Hall, Session Lane

10.00 to 4.00

Tickets £15

Cath Read is a widely exhibited artist, well-known for her work in pastel (See Venue 31). Each year she exhibits at the festival and offers a one-day class in pastel drawing for adults. Paper and drawing boards are provided, but please bring your own pastels (a set of *Inscribe* are recommended although fewer will do) .....and lunch! Places are limited to 10 or 11 adults

# Park and Ride

## The Festival Car Park

**T**he temporary Festival Car Park is on the inland side of Pittenweem. On entering the town from east or west on its main through road, the A917 (mostly known as James Street), follow the AA signs for the Car Park. These direct you to turn into Charles Street for a short distance, then turn you right into the park.

**Please do not take your vehicle into the High Street unless to off-load.** During the Festival, there is a one-way system in operation with waiting restrictions. Further, also during the festival, the only vehicle access to the Harbour, Abbey Wall Road, is closed (with a police presence) to all vehicles except those of residents and businesses. Also closed to traffic is the link between the west end of the High Street and University Avenue.

Pittenweem is a working and welcoming town, and its residents contribute greatly to the success of the Festival, so **please respect and observe all signs.** Do not hesitate to use the Festival Car park, for it is only a few minutes walk to the High Street and the Harbour. And there is the Shuttle Bus!

## The Festival Shuttle Bus



**H**ello, I'm Ewan, your Festival Shuttle Bus driver. Welcome to Pittenweem.

The shuttle operates from the Festival Car park between 10.00 and 5.00, travelling every 15/20 minutes in a loop via the High Street and down Abbey Wall Road to the Harbour, then back up Abbey Wall and along James Street and Charles Street to the Car Park. So don't take your vehicle into the Festival: hop on the Shuttle! Children? Buggy? Wheelchair? Or just leg-weary? I'm here to help, pick up and dropping off along the route. The bus is free (but a small donation helps the Festival funds and is much appreciated). And I sell Festival Programmes!



## Pittenweem Pharmacy

- NHS Pharmacy Services
- Post Office
- Newsagent
- National Lottery Agent
- Cards and Gifts

Market Square  
01333 311243

Art by J Tinkler, age 9

### the scottish fisheries museum trust ltd.

*The Story of Scottish Fishing*

St. Ayles . Harbourhead .  
Anstruther . Fife . Scotland .  
KY10 3AB

**April - September**

Weekdays & Saturdays 10.00 - 5.30  
Sunday 11.00 - 5.00

**October - March**

Weekdays & Saturdays 10.00 - 4.30  
Sunday 12.00 - 4.30

Last admission 1 hour before closing  
time

E-mail: [enquiries@scotfishmuseum.org](mailto:enquiries@scotfishmuseum.org)

Website: [www.scotfishmuseum.org](http://www.scotfishmuseum.org)

Tel & Fax: 01333 310628



## Symphony Hotel

A LEISURE LTD

The Craw's Nest Hotel Staff Team  
Welcome all the Visitors to  
*The Pittenweem Arts Festival*

The Craw's Nest Hotel is Open Daily  
Serving Bar Food and Restaurant  
Lunches and Dinner

Symphony Craw's Nest Hotel  
Bankwell Road  
Anstruther

Telephone - 01333 310691 to make your book  
[www.symphonyhotels.co.uk](http://www.symphonyhotels.co.uk)

# COAST COFFEE

illy Coffee, Snacks, Soup  
Cakes, Smore, Friendly Service  
Open every day from 9am-6pm  
Sit in or take away

13 Shore Street, Anstruther  
t: 01333 311411



The Spindrift Guest House is pleased to support the Festival and has established a reputation for its unique brand of hospitality, friendly service and freshly prepared local produce.  
All rooms are En-suite



Pittenweem Road, Anstruther, Fife KY10 3DT

Tel/Fax: 01333 310573

info@thespindrift.co.uk

www.thespindrift.co.uk



Part of the Scottish Lodging

Home Cooking



## The Cocoa Tree Shop

For A Unique  
Chocolate Experience



Opening Hours

Monday to Saturday 10am - 6.30pm

Sunday 10am - 4.30pm



The Cocoa Tree Shop

9 High Street

Pittenweem

Telephone +44-1333-311-495

www.thecocoatreeshop.com

# CREATIVE SOLUTIONS FOR DESIGN & PRINT

corporate identity business stationery brochure design  
promotional materials large format printing photography

## FULL COLOUR PRINTING & GRAPHIC DESIGN

**01334 477135**

info@westportprint.co.uk

www.westportprint.co.uk

14a Argyle Street, St Andrews Fife KY16 9BP



WEST PORT  
Print & Design Ltd

travel counsellors →

## Relax...

...with the assurance of knowing that all your travel arrangements are in the safest possible hands.

Family Holidays  
Romantic Weekend Breaks  
Adventure & Activity Holidays  
Honeymoons  
City Breaks  
Flight Only  
Charters  
Tailor-made Trips  
Round the World  
Trips of a Lifetime

Contact Your Personal Travel Counsellor  
Liza Reekie  
Tel: 0845 058 7810 or 01333 313653  
Email: liza.reekie@travelcounsellors.com



## Maximising Business Isn't Always Plain Sailing...



## East Neuk Edition

- It's Easy to Advertise
- It's Incredible Value &
- It Works!

## Advertise from just £13.50 per month!

(eighth page on a 3 issue package)

Contact: Liza Reekie  
Tel: 01333 313941  
Email: liza@eastneuk-edition.co.uk



**S**pecial Limited Edition Pittenweem Festival 2008 Calander is available from the box office and various other locations. It features images from Invited Artists and text from Invited Poets from the past 25 years.

Price £10.00



*Image used: North Western Territory by Rheinhard Behrens RSW*

## A BIG THANK YOU

The Pittenweem Arts Festival would especially like to thank **You**, the Visitor, for taking time to come and see us and make the Festival the success it is today. We know that many of you make return visits and many come every year. We also thank you for purchasing this program, where the money raised, goes to the production of next years Festival. Without you it would be a pointless exercise and a waste of time and effort.

